


Inspiron 15

3000 Series

Service Manual (with optical drive)



Notes, cautions, and warnings

 **NOTE:** A NOTE indicates important information that helps you make better use of your computer.

 **CAUTION:** A CAUTION indicates either potential damage to hardware or loss of data and tells you how to avoid the problem.

 **WARNING:** A WARNING indicates a potential for property damage, personal injury, or death.

Contents


Chapter 1: Before working inside your computer.....	7
Before you begin	7
Safety instructions.....	7
Recommended tools.....	8
Chapter 2: After working inside your computer.....	9
Chapter 3: Removing the battery.....	10
Procedure.....	10
Chapter 4: Replacing the battery.....	11
Procedure.....	11
Chapter 5: Removing the optical drive.....	12
Prerequisites.....	12
Procedure.....	12
Chapter 6: Replacing the optical drive.....	14
Procedure.....	14
Post-requisites.....	14
Chapter 7: Removing the keyboard.....	15
Prerequisites.....	15
Procedure.....	15
Chapter 8: Replacing the keyboard.....	17
Procedure.....	17
Post-requisites.....	17
Chapter 9: Removing the base cover.....	18
Prerequisites.....	18
Procedure.....	18
Chapter 10: Replacing the base cover.....	21
Procedure.....	21
Post-requisites.....	21
Chapter 11: Removing the hard drive.....	22
Prerequisites.....	22
Procedure.....	22
Chapter 12: Replacing the hard drive.....	25
Procedure.....	25

Post-requisites.....	25
Chapter 13: Removing the memory module.....	26
Prerequisites.....	26
Procedure.....	26
Chapter 14: Replacing the memory module.....	28
Procedure.....	28
Post-requisites.....	28
Chapter 15: Removing the wireless card.....	30
Prerequisites.....	30
Procedure.....	30
Chapter 16: Replacing the wireless card.....	32
Procedure.....	32
Post-requisites.....	33
Chapter 17: Removing the power-button board.....	34
Prerequisites.....	34
Procedure.....	34
Chapter 18: Replacing the power-button board.....	36
Procedure.....	36
Post-requisites.....	36
Chapter 19: Removing the speakers.....	37
Prerequisites.....	37
Procedure.....	37
Chapter 20: Replacing the speakers.....	38
Procedure.....	38
Post-requisites.....	38
Chapter 21: Removing the I/O board.....	39
Prerequisites.....	39
Procedure.....	39
Chapter 22: Replacing the I/O board.....	41
Procedure.....	41
Post-requisites.....	41
Chapter 23: Removing the coin-cell battery.....	42
Prerequisites.....	42
Procedure.....	42
Chapter 24: Replacing the coin-cell battery.....	43
Procedure.....	43

Post-requisites.....	43
Chapter 25: Removing the heat sink.....	44
Prerequisites.....	44
Procedure.....	44
Chapter 26: Replacing the heat sink.....	46
Procedure.....	46
Post-requisites.....	46
Chapter 27: Removing the system board.....	47
Prerequisites.....	47
Procedure.....	47
Chapter 28: Replacing the system board.....	51
Procedure.....	51
Post-requisites.....	51
Chapter 29: Removing the touch pad.....	52
Prerequisites.....	52
Procedure.....	52
Chapter 30: Replacing the touch pad.....	55
Procedure.....	55
Post-requisites.....	55
Chapter 31: Removing the power-adapter port.....	56
Prerequisites.....	56
Procedure.....	56
Chapter 32: Replacing the power-adapter port.....	58
Procedure.....	58
Post-requisites.....	58
Chapter 33: Removing the display assembly.....	59
Prerequisites.....	59
Procedure.....	59
Chapter 34: Replacing the display assembly.....	62
Procedure.....	62
Post-requisites.....	62
Chapter 35: Removing the display bezel.....	63
Prerequisites.....	63
Procedure.....	63
Chapter 36: Replacing the display bezel.....	65
Procedure.....	65

Post-requisites.....	65
Chapter 37: Removing the display panel.....	66
Prerequisites.....	66
Procedure.....	66
Chapter 38: Replacing the display panel.....	68
Procedure.....	68
Post-requisites.....	68
Chapter 39: Removing the camera.....	69
Prerequisites.....	69
Procedure.....	69
Chapter 40: Replacing the camera.....	71
Procedure.....	71
Post-requisites.....	71
Chapter 41: Removing the display hinges.....	72
Prerequisites.....	72
Procedure.....	72
Chapter 42: Replacing the display hinges.....	74
Procedure.....	74
Post-requisites.....	74
Chapter 43: Removing the palm rest.....	75
Prerequisites.....	75
Procedure.....	75
Chapter 44: Replacing the palm rest.....	77
Procedure.....	77
Post-requisites.....	77
Chapter 45: Flashing the BIOS.....	78
Chapter 46: Getting help and contacting Dell.....	79




Before working inside your computer

 **NOTE:** The images in this document may differ from your computer depending on the configuration you ordered.

Topics:


- [Before you begin](#)
- [Safety instructions](#)
- [Recommended tools](#)


Before you begin


1. Save and close all open files and exit all open applications.
 2. Shut down your computer.
 - Windows 10: Click or tap **Start** >  **Power** > **Shut down**.
 - Windows 8.1: On the **Start** screen, click or tap the power icon  > **Shut down**.
 - Windows 7: Click or tap **Start** > **Shut down**.
-  **NOTE:** If you are using a different operating system, see the documentation of your operating system for shut-down instructions.
3. Disconnect your computer and all attached devices from their electrical outlets.
 4. Disconnect all cables such as telephone cables, network cables and so on, from your computer.
 5. Disconnect all attached devices and peripherals, such as keyboard, mouse, monitor, and so on, from your computer.
 6. Remove any media card and optical disc from your computer, if applicable.


Safety instructions


Use the following safety guidelines to protect your computer from potential damage and ensure your personal safety.


 **NOTE:** Before working inside your computer, read the safety information that shipped with your computer. For more safety best practices, see the Regulatory Compliance home page at www.dell.com/regulatory_compliance.


 **NOTE:** Disconnect all power sources before opening the computer cover or panels. After you finish working inside the computer, replace all covers, panels, and screws before connecting to the power source.

 **CAUTION:** To avoid damaging the computer, ensure that the work surface is flat and clean.

 **CAUTION:** To avoid damaging the components and cards, handle them by their edges and avoid touching pins and contacts.

 **CAUTION:** You should only perform troubleshooting and repairs as authorized or directed by the Dell technical assistance team. Damage due to servicing that is not authorized by Dell is not covered by your warranty. See the safety instructions that shipped with the product or at www.dell.com/regulatory_compliance.

 **CAUTION:** Before touching anything inside your computer, ground yourself by touching an unpainted metal surface, such as the metal at the back of the computer. While you work, periodically touch an unpainted metal surface to dissipate static electricity, which could harm internal components.

 **CAUTION:** When you disconnect a cable, pull on its connector or on its pull tab, not on the cable itself. Some cables have connectors with locking tabs or thumb-screws that you must disengage before disconnecting

the cable. When disconnecting cables, keep them evenly aligned to avoid bending any connector pins. When connecting cables, ensure that the ports and connectors are correctly oriented and aligned.


 **CAUTION:** Press and eject any installed card from the media-card reader.

Recommended tools

The procedures in this document may require the following tools:

- Phillips screwdriver
- Plastic scribe

After working inside your computer

 **CAUTION:** Leaving stray or loose screws inside your computer may severely damage your computer.

1. Replace all screws and ensure that no stray screws remain inside your computer.
2. Connect any external devices, peripherals, and cables you removed before working on your computer.
3. Replace any media cards, discs, and any other parts that you removed before working on your computer.
4. Connect your computer and all attached devices to their electrical outlets.
5. Turn on your computer.

Removing the battery

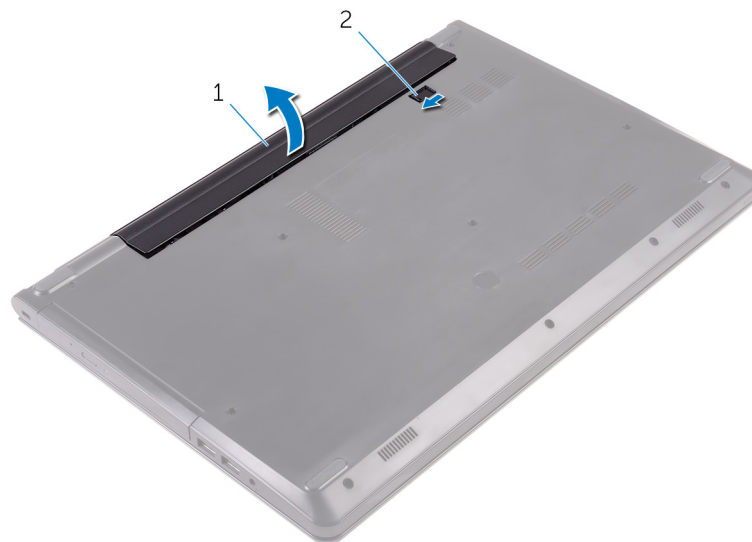
NOTE: Before working inside your computer, read the safety information that shipped with your computer and follow the steps in [Before working inside your computer](#). After working inside your computer, follow the instructions in [After working inside your computer](#). For more safety best practices, see the Regulatory Compliance home page at www.dell.com/regulatory_compliance.

Topics:

- [Procedure](#)

Procedure

1. Close the display and turn the computer over.
2. Slide the battery-release latch to the unlocked position.
3. Lift the battery at an angle and remove the battery from the battery bay.



- a. battery
- b. battery-release latch

4. Turn the computer over, open the display, and press the power button for five seconds to ground the system board.

Replacing the battery

NOTE: Before working inside your computer, read the safety information that shipped with your computer and follow the steps in [Before working inside your computer](#). After working inside your computer, follow the instructions in [After working inside your computer](#). For more safety best practices, see the Regulatory Compliance home page at www.dell.com/regulatory_compliance.

Topics:

- [Procedure](#)

Procedure

1. Close the display and turn the computer over.
2. Place the battery in the battery bay and snap the battery into place.

NOTE: The battery-release latch returns to the locked position if the battery is installed properly.

Removing the optical drive

NOTE: Before working inside your computer, read the safety information that shipped with your computer and follow the steps in [Before working inside your computer](#). After working inside your computer, follow the instructions in [After working inside your computer](#). For more safety best practices, see the Regulatory Compliance home page at www.dell.com/regulatory_compliance.

Topics:

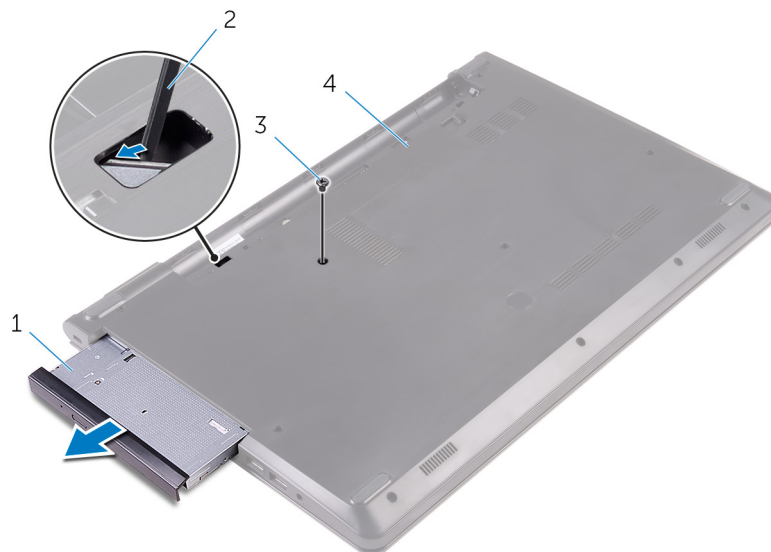
- [Prerequisites](#)
- [Procedure](#)

Prerequisites

Remove the [battery](#).

Procedure

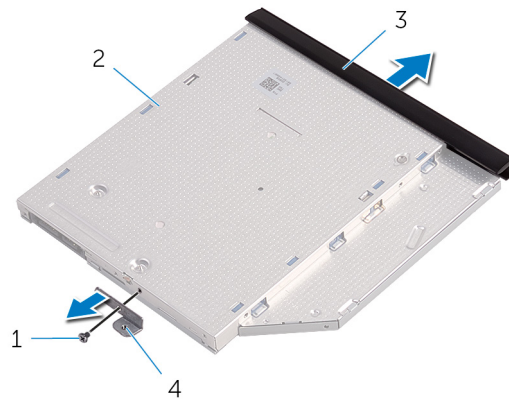
1. Remove the screw that secures the optical-drive assembly to the base cover.
2. Using a plastic scribe, push the optical-drive assembly out of the optical-drive bay.
3. Pull the optical-drive assembly out of the optical-drive bay.



- | | |
|---------------------------|-------------------|
| 1. optical-drive assembly | 2. plastic scribe |
| 3. screw | 4. base cover |

4. Carefully pry the optical-drive bezel off the optical drive.
5. Remove the screw that secures the optical-drive bracket to the optical drive.

NOTE: Note the orientation of the optical-drive bracket so that you can replace it correctly.



- 1. screw
- 3. optical-drive bezel

- 2. optical drive
- 4. optical-drive bracket

Replacing the optical drive

NOTE: Before working inside your computer, read the safety information that shipped with your computer and follow the steps in [Before working inside your computer](#). After working inside your computer, follow the instructions in [After working inside your computer](#). For more safety best practices, see the Regulatory Compliance home page at www.dell.com/regulatory_compliance.

Topics:

- [Procedure](#)
- [Post-requisites](#)

Procedure

1. Align the screw hole on the optical-drive bracket with the screw hole on the optical drive.

NOTE: You must correctly align the optical-drive bracket to ensure that the optical drive can be properly secured to the computer. For correct orientation, see step 5 in "[Removing the optical drive](#)".

2. Replace the screw that secures the optical-drive bracket to the optical drive.
3. Align the tabs on the optical-drive bezel with the slots on the optical drive and snap the optical-drive bezel into place.
4. Slide the optical-drive assembly into the optical-drive bay.
5. Replace the screw that secures the optical-drive assembly to the base cover.

Post-requisites

Replace the [battery](#).

Removing the keyboard

NOTE: Before working inside your computer, read the safety information that shipped with your computer and follow the steps in [Before working inside your computer](#). After working inside your computer, follow the instructions in [After working inside your computer](#). For more safety best practices, see the Regulatory Compliance home page at www.dell.com/regulatory_compliance.

Topics:

- [Prerequisites](#)
- [Procedure](#)

Prerequisites

Remove the [battery](#).

Procedure

1. Turn the computer over and open the display.
2. Using a plastic scribe, gently release the tabs that secure the keyboard to the palm-rest assembly.
3. Slide the keyboard up to release it from the slots on the palm-rest assembly.
4. Carefully turn the keyboard over and place it on the palm-rest assembly.



1. tabs (5)

2. plastic scribe

3. keyboard

4. slots (6)

5. palm-rest assembly

5. Open the latch and disconnect the keyboard cable from the system board.



1. latch

2. keyboard cable

3. keyboard

4. palm-rest assembly

6. Lift the keyboard, along with the cable, off the palm-rest assembly.

Replacing the keyboard

NOTE: Before working inside your computer, read the safety information that shipped with your computer and follow the steps in [Before working inside your computer](#). After working inside your computer, follow the instructions in [After working inside your computer](#). For more safety best practices, see the Regulatory Compliance home page at www.dell.com/regulatory_compliance.

Topics:

- [Procedure](#)
- [Post-requisites](#)

Procedure

1. Slide the keyboard cable into the system-board connector and close the latch to secure the cable.
2. Carefully turn the keyboard over, slide the tabs on the keyboard into the slots on the palm-rest assembly, and snap the keyboard into place.
3. Close the display and turn the computer over.

Post-requisites

Replace the [battery](#).

Removing the base cover

NOTE: Before working inside your computer, read the safety information that shipped with your computer and follow the steps in [Before working inside your computer](#). After working inside your computer, follow the instructions in [After working inside your computer](#). For more safety best practices, see the Regulatory Compliance home page at www.dell.com/regulatory_compliance.

Topics:

- [Prerequisites](#)
- [Procedure](#)

Prerequisites

1. Remove the [battery](#).
2. Follow the procedure from step 1 to step 3 in "[Removing the optical drive](#)".
3. Remove the [keyboard](#).

Procedure

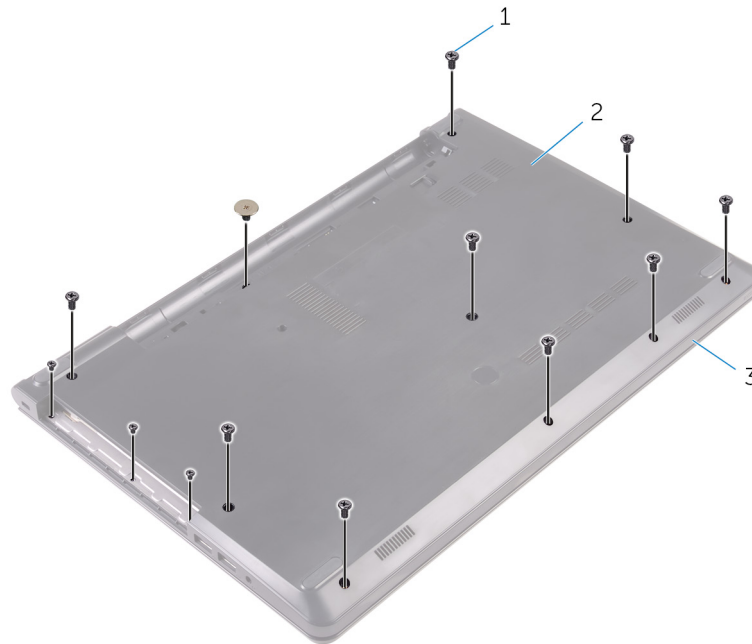
1. Open the display and remove the screws that secure the palm-rest assembly to the base cover from its connector on the system board.
2. Open the latch and disconnect the optical-drive cable from its connector on the system board.



- | | |
|---------------|------------------------|
| 1. screws (5) | 2. palm-rest assembly |
| 3. base cover | 4. optical-drive cable |

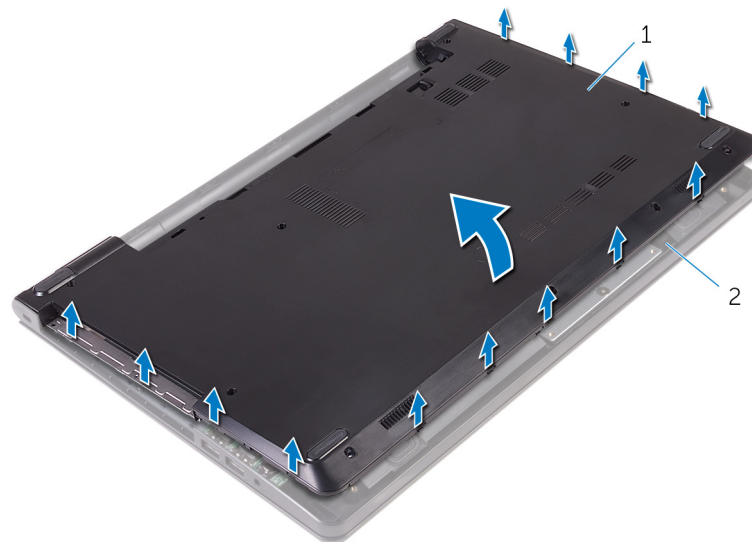
5. latch

3. Close the display and turn the computer over.
4. Remove the screws that secure the base cover to the palm-rest assembly.



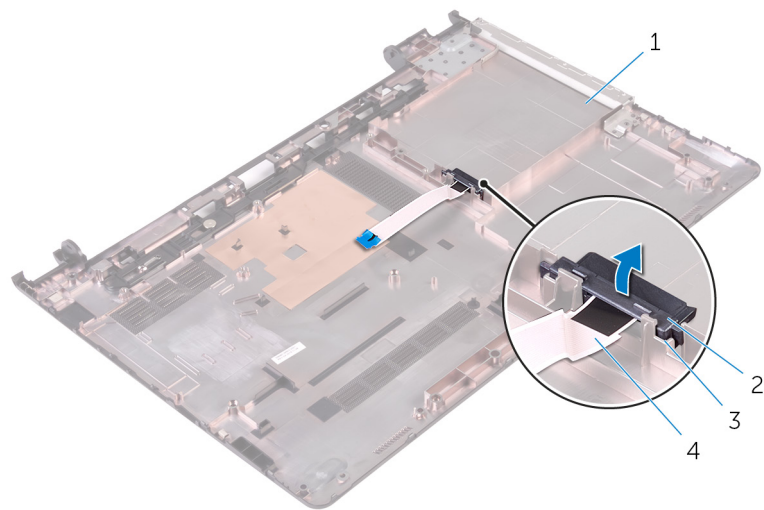
- a. screws (13)
- b. base cover
- c. palm-rest assembly

5. Using your fingertips, gently pry the base cover off the palm-rest assembly.



- a. base cover
- b. palm-rest assembly

6. Turn the base cover over.
7. Release the optical-drive interposer from the tabs on the base cover.



1. base cover

2. optical-drive interposer

3. tabs (2)

4. optical-drive cable

Replacing the base cover

NOTE: Before working inside your computer, read the safety information that shipped with your computer and follow the steps in [Before working inside your computer](#). After working inside your computer, follow the instructions in [After working inside your computer](#). For more safety best practices, see the Regulatory Compliance home page at www.dell.com/regulatory_compliance.

Topics:

- [Procedure](#)
- [Post-requisites](#)


Procedure

1. Align the optical-drive interposer with the tabs on the base cover and snap it into place.
2. Turn the base cover over.
3. Slide the tabs on the base cover into the slots on the palm-rest assembly and snap the base cover into place.
4. Replace the screws that secure the base cover to the palm-rest assembly.
5. Turn the computer over.
6. Open the display and replace the screws that secure the palm-rest assembly to the base cover.
7. Slide the optical-drive cable into its connector and close the latch to secure the cable.

Post-requisites

1. Replace the [keyboard](#).
2. Follow the procedures from step 4 to step 5 in "[Replacing the optical drive](#)".
3. Replace the [battery](#).

Removing the hard drive

 **NOTE:** Before working inside your computer, read the safety information that shipped with your computer and follow the steps in [Before working inside your computer](#). After working inside your computer, follow the instructions in [After working inside your computer](#). For more safety best practices, see the Regulatory Compliance home page at www.dell.com/regulatory_compliance.

 **CAUTION:** Hard drives are fragile. Exercise care when handling the hard drive.

 **CAUTION:** To avoid data loss, do not remove the hard drive while the computer is in sleep or on state.

Topics:

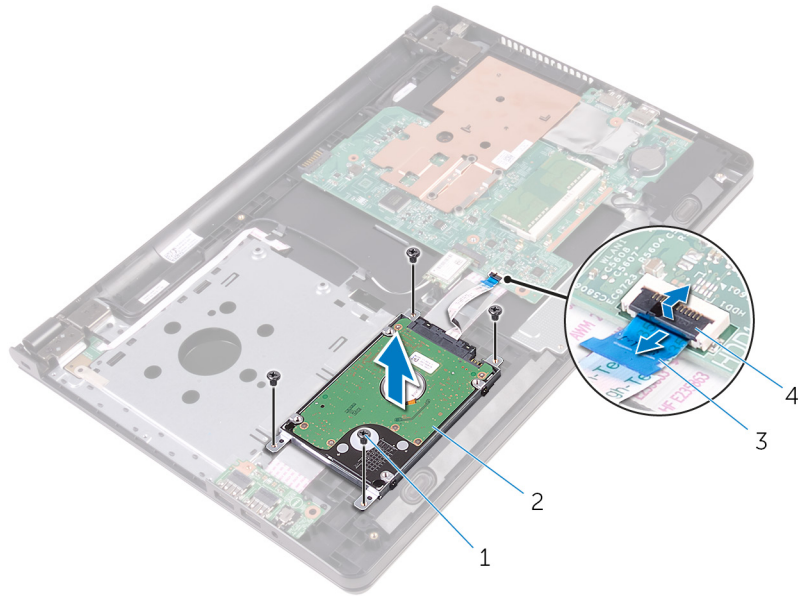
- [Prerequisites](#)
- [Procedure](#)

Prerequisites

1. Remove the [battery](#).
2. Follow the procedure from step 1 to step 3 in "[Removing the optical drive](#)".
3. Remove the [keyboard](#).
4. Follow the procedure from step 1 to step 5 in "[Removing the base cover](#)".

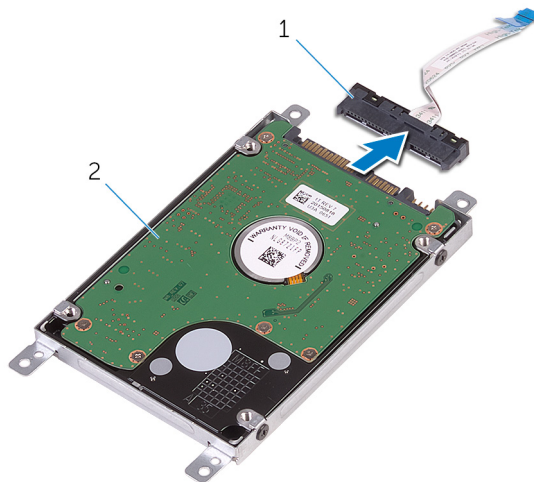
Procedure

1. Remove the screws that secure the hard-drive assembly to the palm-rest assembly.
2. Open the latch and disconnect the hard-drive cable from the system board.
3. Lift the hard-drive assembly off the palm-rest assembly.



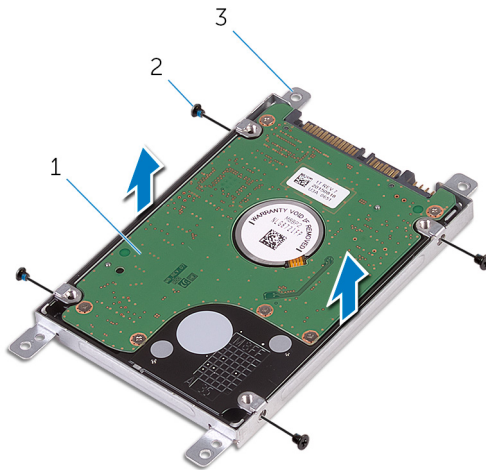
- 1. screws (4)
- 2. hard-drive assembly
- 3. hard-drive cable
- 4. latch

4. Disconnect the interposer from the hard-drive assembly.




- a. interposer
- b. hard-drive assembly

5. Remove the screws that secure the hard-drive bracket to the hard drive and lift it off the hard drive.



- a. hard drive
- b. screws (4)
- c. hard-drive bracket

Replacing the hard drive

 **NOTE:** Before working inside your computer, read the safety information that shipped with your computer and follow the steps in [Before working inside your computer](#). After working inside your computer, follow the instructions in [After working inside your computer](#). For more safety best practices, see the Regulatory Compliance home page at www.dell.com/regulatory_compliance.

 **CAUTION:** Hard drives are fragile. Exercise care when handling the hard drive.

Topics:

- [Procedure](#)
- [Post-requisites](#)

Procedure

1. Align the screw holes on the hard-drive bracket with the screw holes on the hard drive.
2. Replace the screws that secure the hard-drive bracket to the hard drive.
3. Connect the interposer to the hard-drive assembly.
4. Align the screw holes on the hard-drive assembly with the screw holes on the palm-rest assembly.
5. Replace the screws that secure the hard-drive assembly to the palm-rest assembly.
6. Slide the hard-drive cable into the system-board connector and close the latch to secure the cable.

Post-requisites

1. Follow the procedure from step 3 to step 7 in [“Replacing the base cover”](#).
2. Replace the [keyboard](#).
3. Follow the procedures from step 4 to step 5 in [“Replacing the optical drive”](#).
4. Replace the [battery](#).

Removing the memory module

NOTE: Before working inside your computer, read the safety information that shipped with your computer and follow the steps in [Before working inside your computer](#). After working inside your computer, follow the instructions in [After working inside your computer](#). For more safety best practices, see the Regulatory Compliance home page at www.dell.com/regulatory_compliance.

Topics:

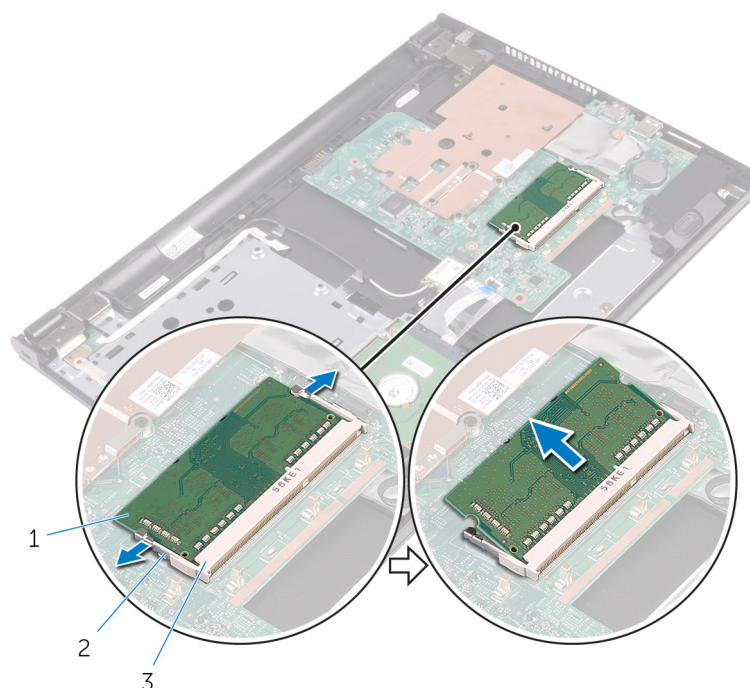
- [Prerequisites](#)
- [Procedure](#)

Prerequisites

1. Remove the [battery](#).
2. Follow the procedure from step 1 to step 3 in "[Removing the optical drive](#)".
3. Remove the [keyboard](#).
4. Follow the procedure from step 1 to step 5 in "[Removing the base cover](#)".

Procedure

1. Using your fingertips, spread apart the securing clips at each end of the memory-module slot until the memory module pops up.
2. Slide and remove the memory module from the memory-module slot.



- a. memory module
- b. securing clips (2)

c. memory-module slot

Replacing the memory module

NOTE: Before working inside your computer, read the safety information that shipped with your computer and follow the steps in [Before working inside your computer](#). After working inside your computer, follow the instructions in [After working inside your computer](#). For more safety best practices, see the Regulatory Compliance home page at www.dell.com/regulatory_compliance.

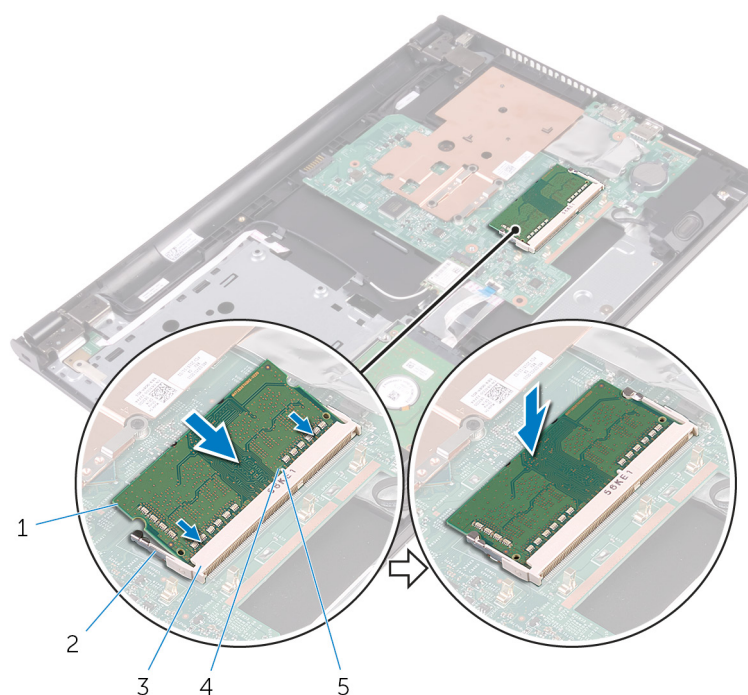
Topics:

- [Procedure](#)
- [Post-requisites](#)

Procedure

1. Align the notch on the memory module with the tab on the memory-module slot.
2. Slide the memory module firmly into the slot at an angle and press the memory module down until it clicks into place.

NOTE: If you do not hear the click, remove the memory module and reinstall it.



1. memory module
3. memory-module slot
5. tab

2. securing clips (2)
4. notch

Post-requisites

1. Follow the procedure from step 3 to step 7 in ["Replacing the base cover"](#).

2. Replace the [keyboard](#).
3. Follow the procedures from step 4 to step 5 in "[Replacing the optical drive](#)".
4. Replace the [battery](#).

Removing the wireless card

NOTE: Before working inside your computer, read the safety information that shipped with your computer and follow the steps in [Before working inside your computer](#). After working inside your computer, follow the instructions in [After working inside your computer](#). For more safety best practices, see the Regulatory Compliance home page at www.dell.com/regulatory_compliance.

Topics:

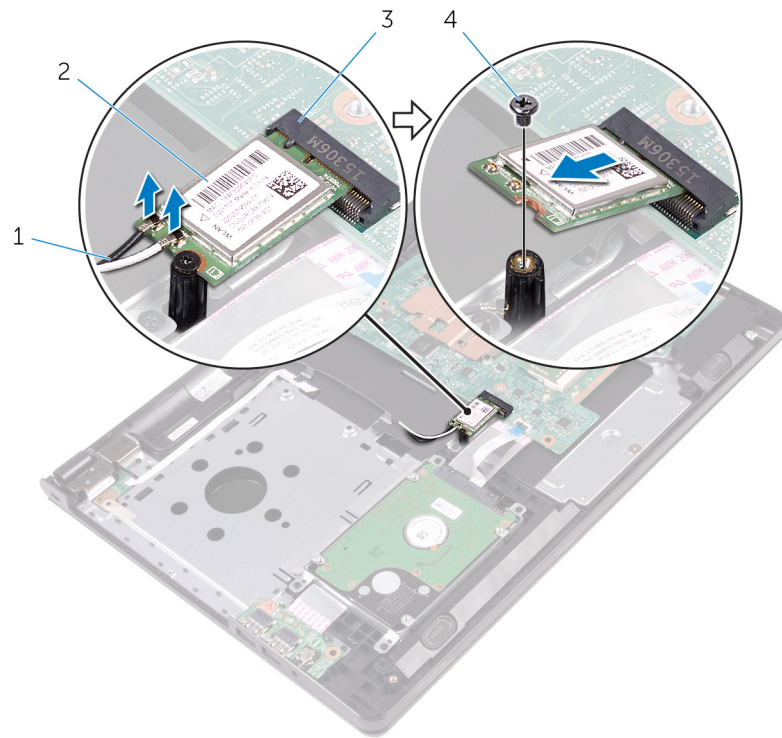
- [Prerequisites](#)
- [Procedure](#)

Prerequisites

1. Remove the [battery](#).
2. Follow the procedure from step 1 to step 3 in "[Removing the optical drive](#)".
3. Remove the [keyboard](#).
4. Follow the procedure from step 1 to step 5 in "[Removing the base cover](#)".

Procedure

1. Disconnect the antenna cables from the wireless card.
2. Remove the screw that secures the wireless card to the system board.
3. Slide and remove the wireless card from the wireless-card slot.




1. antenna cables (2)

2. wireless card

3. wireless-card slot

4. screw

Replacing the wireless card

 **NOTE:** Before working inside your computer, read the safety information that shipped with your computer and follow the steps in [Before working inside your computer](#). After working inside your computer, follow the instructions in [After working inside your computer](#). For more safety best practices, see the Regulatory Compliance home page at www.dell.com/regulatory_compliance.

Topics:

- [Procedure](#)
- [Post-requisites](#)

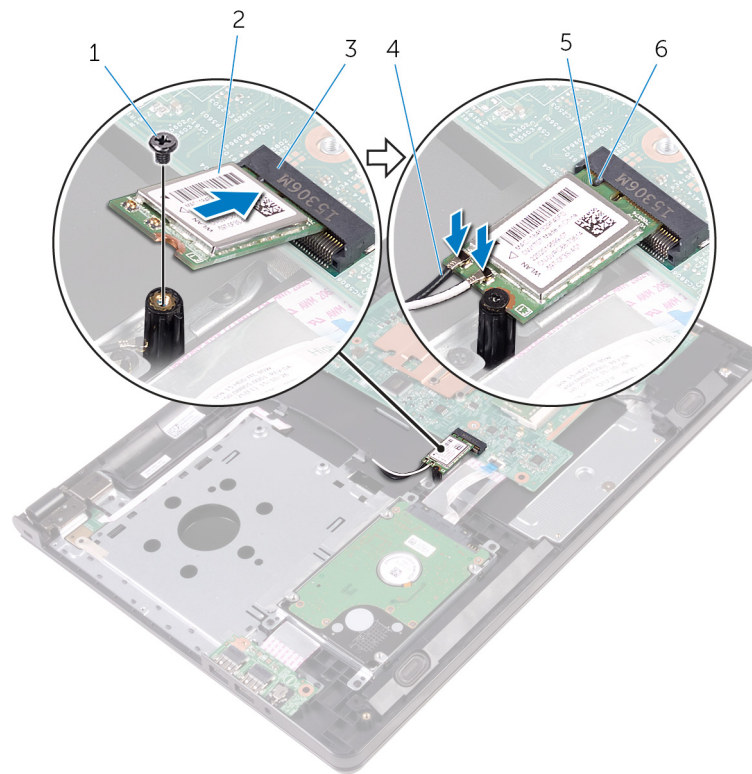
Procedure

 **CAUTION:** To avoid damage to the wireless card, do not place any cables under it.

1. Align the notch on the wireless card with the tab on the wireless-card slot and slide the card into the slot.
2. Press the other end of the wireless card and replace the screw that secures the wireless card to the system board.
3. Connect the antenna cables to the wireless card.

The following table provides the antenna-cable color scheme for the wireless card supported by your computer:

Connectors on the wireless card	Antenna-cable color
Main (white triangle)	White
Auxiliary (black triangle)	Black



- | | |
|-----------------------|-----------------------|
| 1. screw | 2. wireless card |
| 3. wireless-card slot | 4. antenna cables (2) |
| 5. notch | 6. tab |

Post-requisites

1. Follow the procedure from step 3 to step 7 in [“Replacing the base cover”](#).
2. Replace the [keyboard](#).
3. Follow the procedures from step 4 to step 5 in [“Replacing the optical drive”](#).
4. Replace the [battery](#).

Removing the power-button board

NOTE: Before working inside your computer, read the safety information that shipped with your computer and follow the steps in [Before working inside your computer](#). After working inside your computer, follow the instructions in [After working inside your computer](#). For more safety best practices, see the Regulatory Compliance home page at www.dell.com/regulatory_compliance.

Topics:

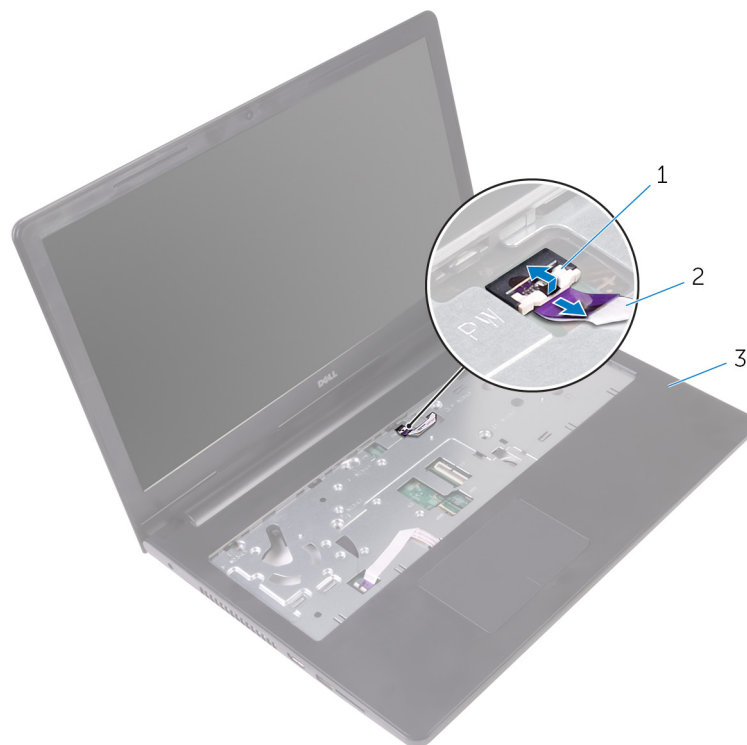
- [Prerequisites](#)
- [Procedure](#)

Prerequisites

1. Remove the [battery](#).
2. Follow the procedure from step 1 to step 3 in "[Removing the optical drive](#)".
3. Remove the [keyboard](#).
4. Follow the procedure from step 1 to step 5 in "[Removing the base cover](#)".

Procedure

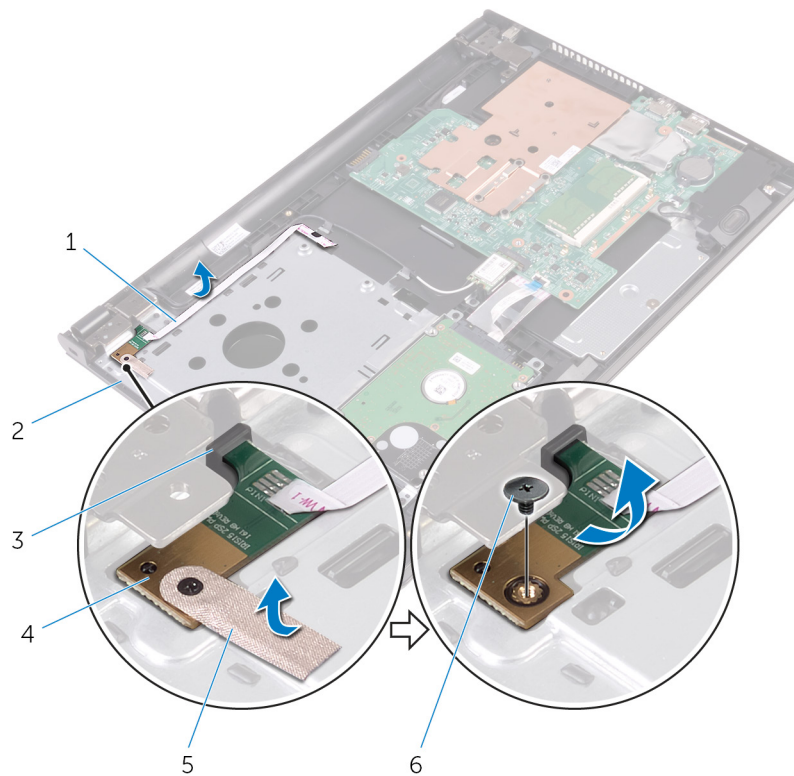
1. Turn the computer over and open the display as far as possible.
2. Open the latch and disconnect the power-button board cable from the system board.



- a. latch

- b. power-button board cable
- c. palm rest assembly

3. Close the display and turn the computer over.
4. Peel the tape that secures the power-button board cable to the palm-rest assembly.
5. Remove the screw that secures the power-button board to the palm-rest assembly.
6. Note the power-button board cable routing and peel it off the palm-rest assembly.
7. Slide and remove the power-button board, along with its cable, from under the tab on the palm-rest assembly.



- | | |
|-----------------------------|-----------------------|
| 1. power-button board cable | 2. palm-rest assembly |
| 3. tab | 4. power-button board |
| 5. tape | 6. screw |

Replacing the power-button board

NOTE: Before working inside your computer, read the safety information that shipped with your computer and follow the steps in [Before working inside your computer](#). After working inside your computer, follow the instructions in [After working inside your computer](#). For more safety best practices, see the Regulatory Compliance home page at www.dell.com/regulatory_compliance.

Topics:

- [Procedure](#)
- [Post-requisites](#)

Procedure

1. Slide the power-button board under the tab on the palm-rest assembly and align the screw hole on the power-button board with the screw hole on the palm-rest assembly.
2. Replace the screw that secures the power-button board to the palm-rest assembly.
3. Adhere the tape that secures the power-button board to the palm-rest assembly.
4. Adhere the power-button board cable to the palm-rest assembly.
5. Slide the power-button board cable through the slot on the palm-rest assembly.
6. Turn the computer over and open the display as far as possible.
7. Slide the power-button board cable into its connector on the system board and close the latch to secure the cable.

Post-requisites

1. Follow the procedure from step 3 to step 7 in [“Replacing the base cover”](#).
2. Replace the [keyboard](#).
3. Follow the procedures from step 4 to step 5 in [“Replacing the optical drive”](#).
4. Replace the [battery](#).

Removing the speakers

NOTE: Before working inside your computer, read the safety information that shipped with your computer and follow the steps in [Before working inside your computer](#). After working inside your computer, follow the instructions in [After working inside your computer](#). For more safety best practices, see the Regulatory Compliance home page at www.dell.com/regulatory_compliance.

Topics:

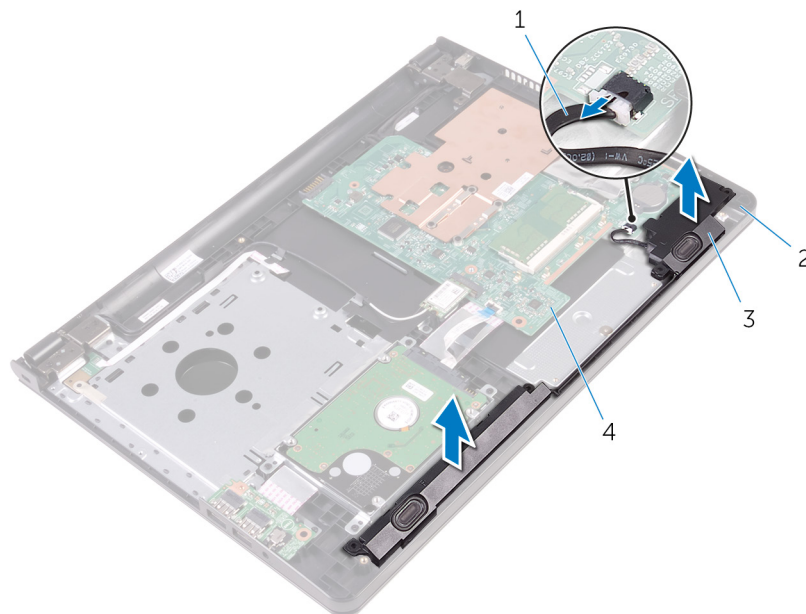
- [Prerequisites](#)
- [Procedure](#)

Prerequisites

1. Remove the [battery](#).
2. Follow the procedure from step 1 to step 3 in "[Removing the optical drive](#)".
3. Remove the [keyboard](#).
4. Follow the procedure from step 1 to step 5 in "[Removing the base cover](#)".

Procedure

1. Disconnect the speaker cable from the system board.
2. Note the speaker-cable routing and remove the cable from the routing guides on the palm-rest assembly.
3. Lift the speakers, along with the speaker cable, off the palm-rest assembly.



1. speaker cable
3. speakers (2)

2. palm-rest assembly
4. system board

Replacing the speakers

NOTE: Before working inside your computer, read the safety information that shipped with your computer and follow the steps in [Before working inside your computer](#). After working inside your computer, follow the instructions in [After working inside your computer](#). For more safety best practices, see the Regulatory Compliance home page at www.dell.com/regulatory_compliance.

Topics:

- [Procedure](#)
- [Post-requisites](#)

Procedure

1. Align the speakers using the alignment posts on the palm-rest assembly and snap the speakers into place.
2. Route the speaker cable through the routing guides on the palm-rest assembly.
3. Connect the speaker cable to the system board.

Post-requisites

1. Follow the procedure from step 3 to step 7 in "[Replacing the base cover](#)".
2. Replace the [keyboard](#).
3. Follow the procedures from step 4 to step 5 in "[Replacing the optical drive](#)".
4. Replace the [battery](#).

Removing the I/O board

NOTE: Before working inside your computer, read the safety information that shipped with your computer and follow the steps in [Before working inside your computer](#). After working inside your computer, follow the instructions in [After working inside your computer](#). For more safety best practices, see the Regulatory Compliance home page at www.dell.com/regulatory_compliance.

Topics:

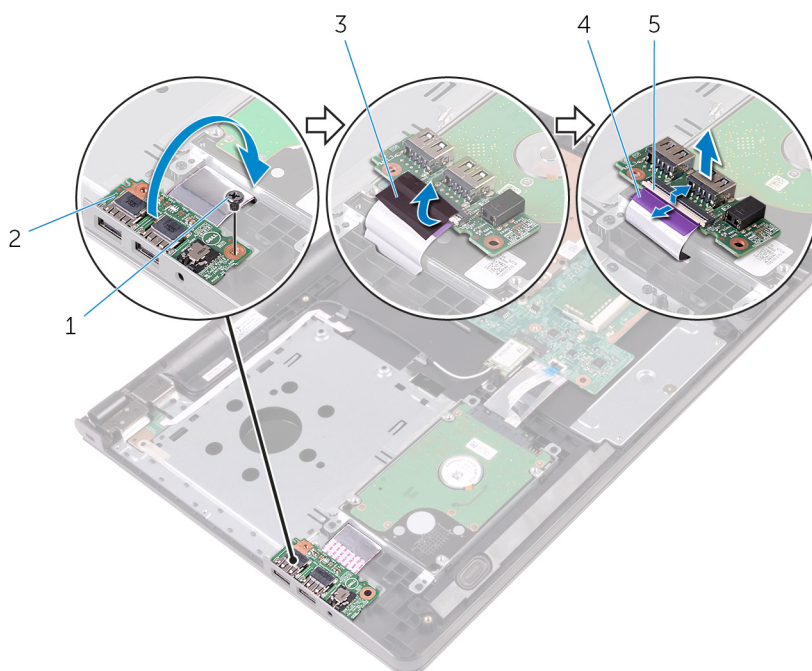
- [Prerequisites](#)
- [Procedure](#)

Prerequisites

1. Remove the [battery](#).
2. Follow the procedure from step 1 to step 3 in "[Removing the optical drive](#)".
3. Remove the [keyboard](#).
4. Follow the procedure from step 1 to step 5 in "[Removing the base cover](#)".

Procedure

1. Remove the screw that secures the I/O board to the palm-rest assembly.
2. Turn the I/O board over and peel the tape that secures the I/O-board cable to the I/O board.
3. Open the latch and disconnect the I/O-board cable from the I/O board.
4. Lift the I/O board off the palm-rest assembly.



1. screw

2. I/O board

3. tape

4. I/O-board cable

5. latch

Replacing the I/O board

NOTE: Before working inside your computer, read the safety information that shipped with your computer and follow the steps in [Before working inside your computer](#). After working inside your computer, follow the instructions in [After working inside your computer](#). For more safety best practices, see the Regulatory Compliance home page at www.dell.com/regulatory_compliance.

Topics:

- [Procedure](#)
- [Post-requisites](#)

Procedure

1. Slide the I/O-board cable into its connector on the I/O board and close the latch to secure the cable.
2. Adhere the tape that secures the I/O-board cable to the I/O board.
3. Turn the I/O board over and align the screw hole on the I/O board with the screw hole on the palm-rest assembly.
4. Replace the screw that secures the I/O board to the palm-rest assembly.

Post-requisites

1. Follow the procedure from step 3 to step 7 in [“Replacing the base cover”](#).
2. Replace the [keyboard](#).
3. Follow the procedures from step 4 to step 5 in [“Replacing the optical drive”](#).
4. Replace the [battery](#).

Removing the coin-cell battery

NOTE: Before working inside your computer, read the safety information that shipped with your computer and follow the steps in [Before working inside your computer](#). After working inside your computer, follow the instructions in [After working inside your computer](#). For more safety best practices, see the Regulatory Compliance home page at www.dell.com/regulatory_compliance.

CAUTION: Removing the coin-cell battery resets the BIOS setup program's settings to default. It is recommended that you note the BIOS setup program's settings before removing the coin-cell battery.

Topics:

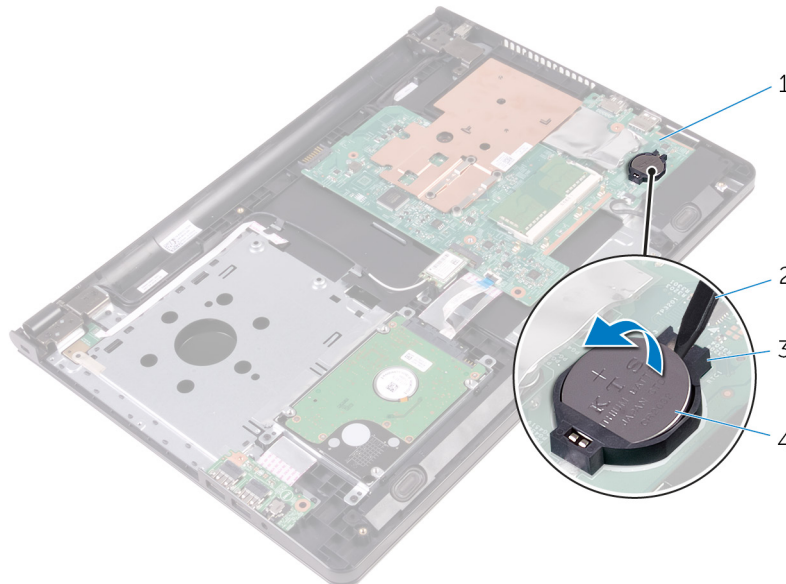
- [Prerequisites](#)
- [Procedure](#)

Prerequisites

1. Remove the [battery](#).
2. Follow the procedure from step 1 to step 3 in "[Removing the optical drive](#)".
3. Remove the [keyboard](#).
4. Follow the procedure from step 1 to step 5 in "[Removing the base cover](#)".

Procedure

Using a plastic scribe, gently pry the coin-cell battery out of the battery socket on the system board.



- | | |
|-------------------|----------------------|
| 1. system board | 2. plastic scribe |
| 3. battery socket | 4. coin-cell battery |

Replacing the coin-cell battery

NOTE: Before working inside your computer, read the safety information that shipped with your computer and follow the steps in [Before working inside your computer](#). After working inside your computer, follow the instructions in [After working inside your computer](#). For more safety best practices, see the Regulatory Compliance home page at www.dell.com/regulatory_compliance.

Topics:

- [Procedure](#)
- [Post-requisites](#)


Procedure


With the positive-side facing up, snap the coin-cell battery into the battery socket on the system board.


Post-requisites

1. Follow the procedure from step 3 to step 7 in "[Replacing the base cover](#)".
2. Replace the [keyboard](#).
3. Follow the procedures from step 4 to step 5 in "[Replacing the optical drive](#)".
4. Replace the [battery](#).

Removing the heat sink

 **NOTE:** Before working inside your computer, read the safety information that shipped with your computer and follow the steps in [Before working inside your computer](#). After working inside your computer, follow the instructions in [After working inside your computer](#). For more safety best practices, see the Regulatory Compliance home page at www.dell.com/regulatory_compliance.

 **NOTE:** The heat sink may become hot during normal operation. Allow sufficient time for the heat sink to cool before you touch it.

 **CAUTION:** For maximum cooling of the processor, do not touch the heat transfer areas on the heat sink. The oils in your skin can reduce the heat transfer capability of the thermal grease.

Topics:

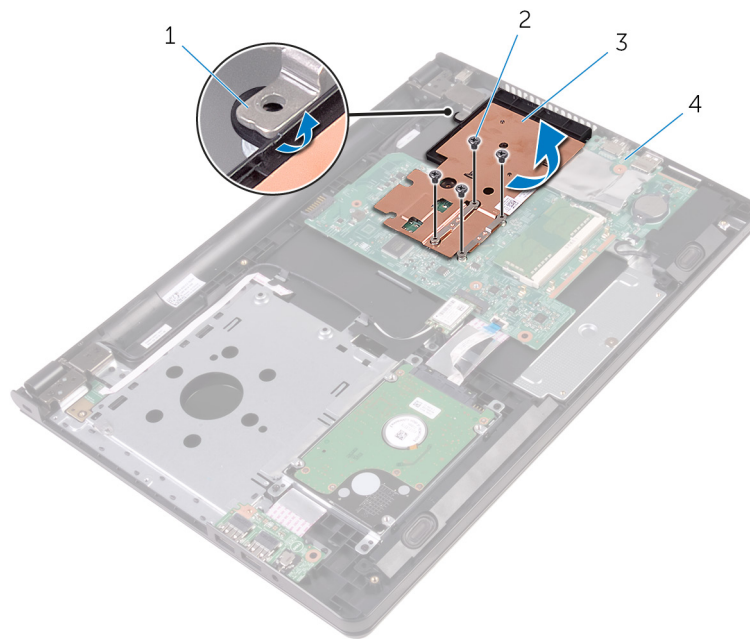
- [Prerequisites](#)
- [Procedure](#)

Prerequisites

1. Remove the [battery](#).
2. Follow the procedure from step 1 to step 3 in “[Removing the optical drive](#)”.
3. Remove the [keyboard](#).
4. Follow the procedure from step 1 to step 5 in “[Removing the base cover](#)”.

Procedure

1. Remove the screws that secure the heat sink to the system board.
2. Slide to release the heat sink from the tab on the display hinge.
3. Lift the heat sink off the system board.




1. tab

3. heat sink


2. screws (4)

4. system board

Replacing the heat sink

 **NOTE:** Before working inside your computer, read the safety information that shipped with your computer and follow the steps in [Before working inside your computer](#). After working inside your computer, follow the instructions in [After working inside your computer](#). For more safety best practices, see the Regulatory Compliance home page at www.dell.com/regulatory_compliance.

 **CAUTION:** Incorrect alignment of the heat sink can damage the system board and processor.

 **NOTE:** The original thermal grease can be reused if the original system board and heat sink are reinstalled together. If either the system board or the heat sink is replaced, use the thermal pad provided in the kit to ensure that thermal conductivity is achieved.

Topics:

- [Procedure](#)
- [Post-requisites](#)

Procedure

1. Slide the heat sink below the tab on the display hinge and place it on the system board.
2. Align the screws on the heat sink with the screw holes on the system board.
3. Replace the screws that secure the heat sink to the system board.

Post-requisites

1. Follow the procedure from step 3 to step 7 in "[Replacing the base cover](#)".
2. Replace the [keyboard](#).
3. Follow the procedures from step 4 to step 5 in "[Replacing the optical drive](#)".
4. Replace the [battery](#).

Removing the system board

- NOTE:** Before working inside your computer, read the safety information that shipped with your computer and follow the steps in [Before working inside your computer](#). After working inside your computer, follow the instructions in [After working inside your computer](#). For more safety best practices, see the Regulatory Compliance home page at www.dell.com/regulatory_compliance.
- NOTE:** Your computer's Service Tag is stored in the system board. You must enter the Service Tag in the BIOS setup program after you replace the system board.
- NOTE:** Replacing the system board removes any changes you have made to the BIOS using the BIOS setup program. You must make the desired changes again after you replace the system board.
- NOTE:** Before disconnecting the cables from the system board, note the location of the connectors so that you can reconnect the cables correctly after you replace the system board.

Topics:

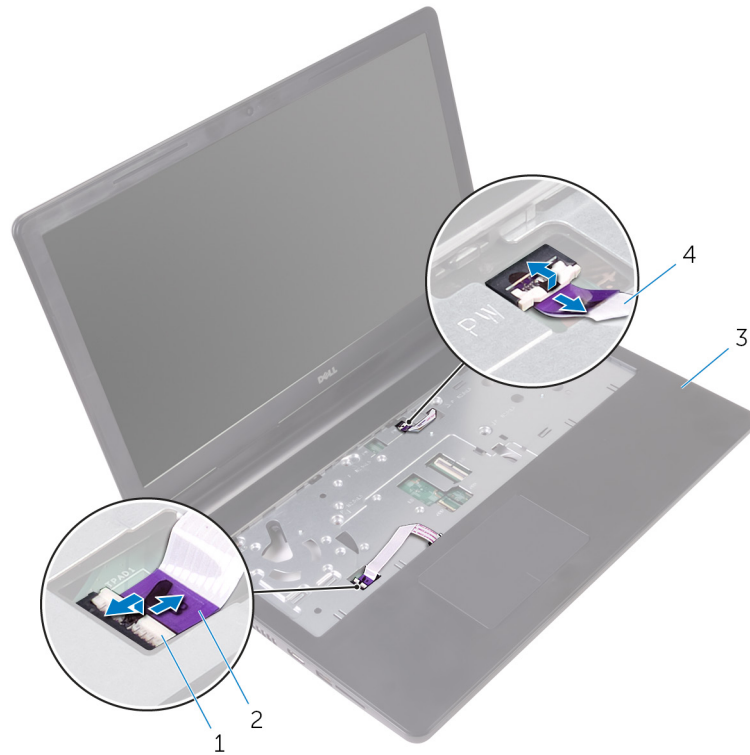
- [Prerequisites](#)
- [Procedure](#)

Prerequisites

1. Remove the [battery](#).
2. Follow the procedure from step 1 to step 3 in "[Removing the optical drive](#)".
3. Remove the [keyboard](#).
4. Follow the procedure from step 1 to step 5 in "[Removing the base cover](#)".
5. Follow the procedure from step 1 to step 3 in "[Removing the hard drive](#)".
6. Remove the [memory module](#).
7. Remove the [wireless card](#).
8. Remove the [I/O board](#).
9. Remove the [heat sink](#).

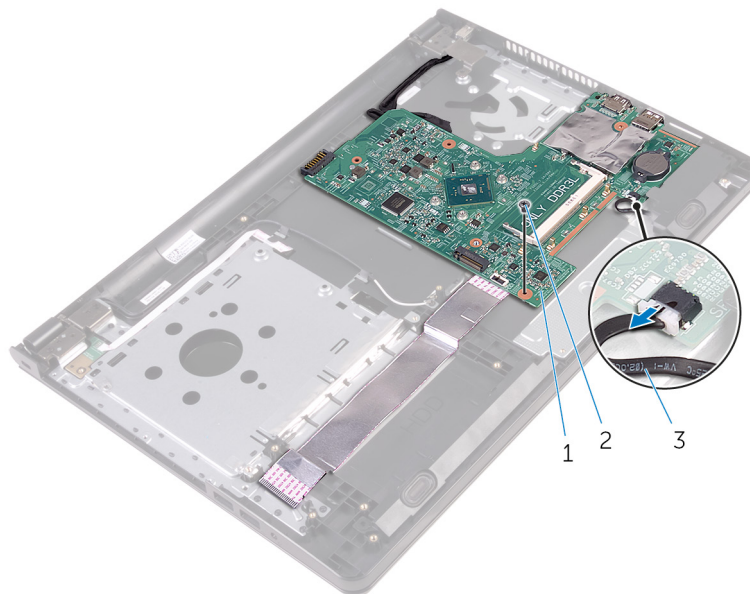
Procedure

1. Turn the computer over and open the display as far as possible.
2. Open the latches and disconnect the power-button board cable and touch-pad cable from the system board.



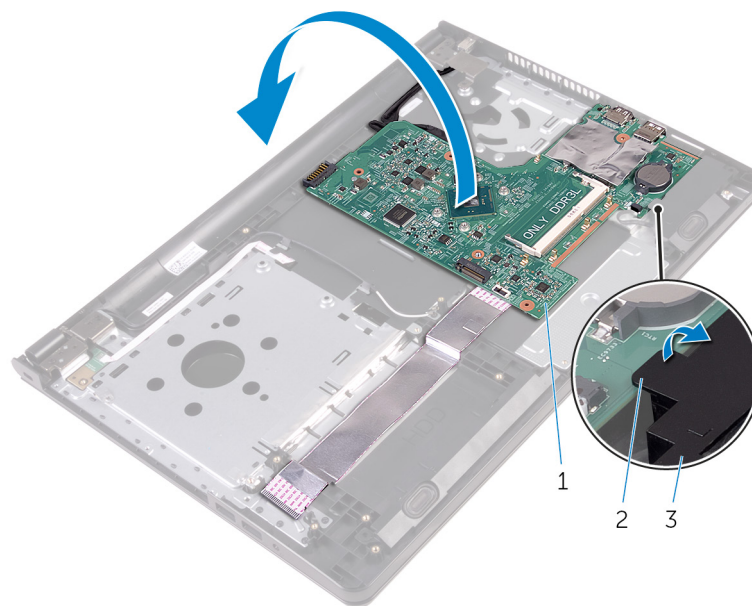
- 1. latches (2)
- 2. touch-pad cable
- 3. palm-rest assembly
- 4. power-button board cable

- 3. Close the display and turn the computer over.
- 4. Disconnect the speaker cable from the system board.
- 5. Remove the screw that secures the system board to the palm-rest assembly.



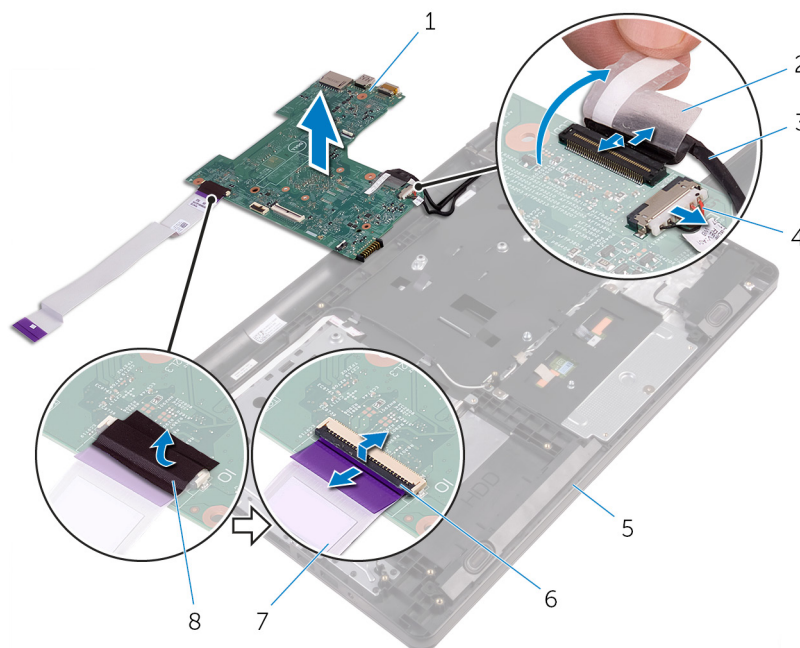
- a. system board
- b. screw
- c. speaker cable

6. Lift the speaker at an angle to release the system board.
7. Carefully lift the system board to release the ports from the slots on the palm-rest assembly.
8. Turn the system board over.



- a. system board
- b. tab
- c. speaker

9. Peel the tapes that secure the I/O-board cable and display cable to the system board.
10. Open the latches and disconnect the I/O-board cable and display cable from the system board.
11. Disconnect the power-adaptor port cable from the system board.
12. Lift the system board off the palm-rest assembly.



- 1. system board
- 2. tape
- 3. display cable
- 4. power-adaptor port cable

5. palm-rest assembly

7. I/O-board cable

6. latches (2)

8. tape

Replacing the system board

- NOTE:** Before working inside your computer, read the safety information that shipped with your computer and follow the steps in [Before working inside your computer](#). After working inside your computer, follow the instructions in [After working inside your computer](#). For more safety best practices, see the Regulatory Compliance home page at www.dell.com/regulatory_compliance.
- NOTE:** Your computer's Service Tag is stored in the system board. You must enter the Service Tag in the BIOS setup program after you replace the system board.
- NOTE:** Replacing the system board removes any changes you have made to the BIOS using the BIOS setup program. You must make the desired changes again after you replace the system board.

Topics:

- [Procedure](#)
- [Post-requisites](#)

Procedure

1. Slide the display cable and I/O-board cable into the connectors on the system board and close the latches to secure the cables.
2. Adhere the tapes that secure the display cable and I/O-board cable to the system board.
3. Connect the power-adaptor port cable to the system board.
4. Turn the system board over.
5. Slide the ports into the slots on the palm-rest assembly.
6. Slide the system board below the tab on the left speaker and align the screw hole on the system board with the screw hole on the palm-rest assembly.
7. Replace the screw that secures the system board to the palm-rest assembly.
8. Connect the speaker cable to the system board.
9. Turn the computer over and open the display as far as possible.
10. Slide the power-button board cable and touch-pad cable into the connectors on the system board and close the latches to secure the cables.

Post-requisites

1. Replace the [heat sink](#).
2. Replace the [I/O board](#).
3. Replace the [wireless card](#).
4. Replace the [memory module](#).
5. Follow the procedure from step 4 to step 6 in "[Replacing the hard drive](#)".
6. Follow the procedure from step 3 to step 7 in "[Replacing the base cover](#)".
7. Follow the procedures from step 4 to step 5 in "[Replacing the optical drive](#)".
8. Replace the [keyboard](#).
9. Replace the [battery](#).

Removing the touch pad

NOTE: Before working inside your computer, read the safety information that shipped with your computer and follow the steps in [Before working inside your computer](#). After working inside your computer, follow the instructions in [After working inside your computer](#). For more safety best practices, see the Regulatory Compliance home page at www.dell.com/regulatory_compliance.

Topics:

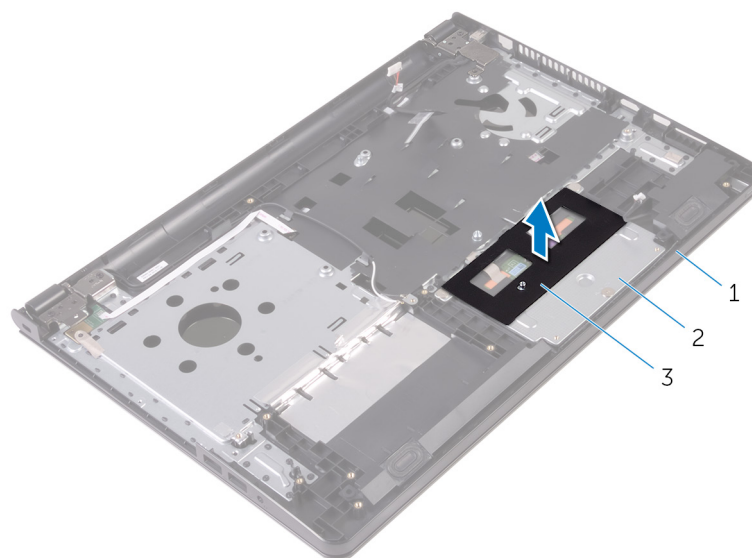
- [Prerequisites](#)
- [Procedure](#)

Prerequisites

1. Remove the [battery](#).
2. Follow the procedure from step 1 to step 3 in "[Removing the optical drive](#)".
3. Remove the [keyboard](#).
4. Follow the procedure from step 1 to step 5 in "[Removing the base cover](#)".
5. Follow the procedure from step 1 to step 3 in "[Removing the hard drive](#)".
6. Remove the [memory module](#).
7. Remove the [wireless card](#).
8. Remove the [I/O board](#).
9. Remove the [heat sink](#).
10. Remove the [system board](#).

Procedure

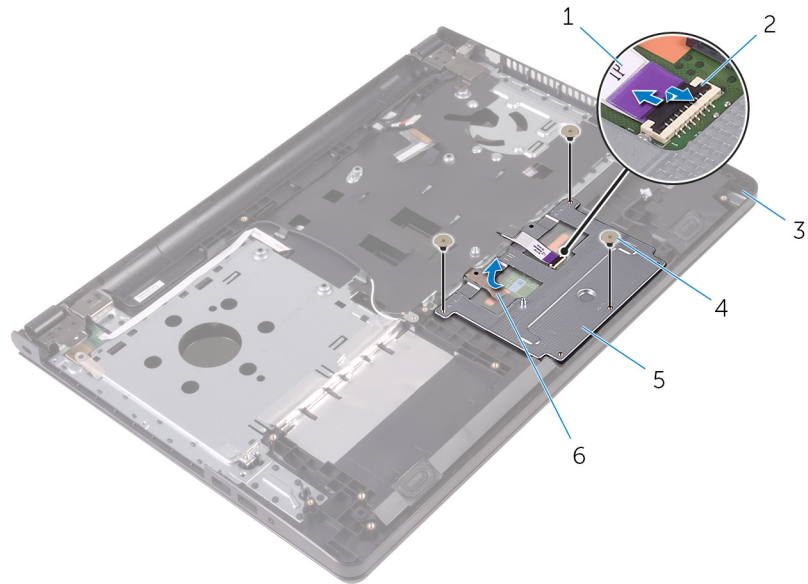
1. Peel the tape off the touch-pad bracket.



- a. palm-rest assembly

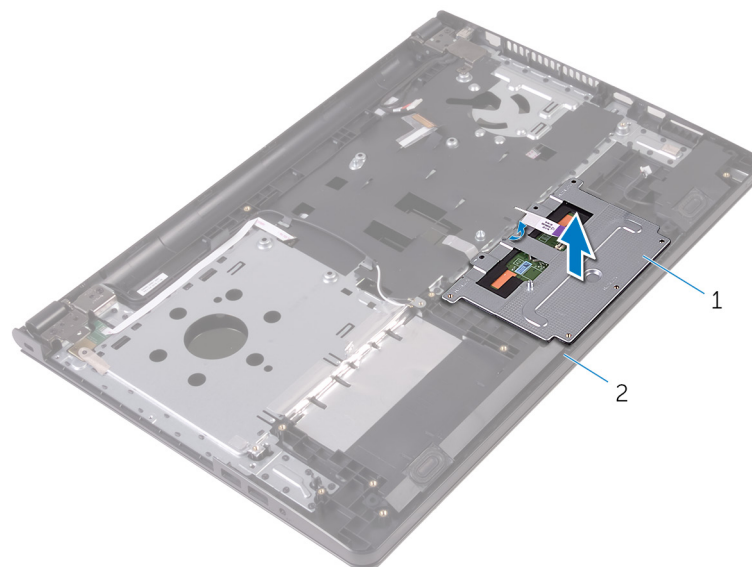
- b. touch-pad bracket
- c. tape

2. Remove the screws that secure the touch-pad bracket to the touch pad.
3. Peel off the tape that secures the touch-pad bracket to the touch pad.
4. Open the latch and disconnect the touch-pad cable from the touch pad.



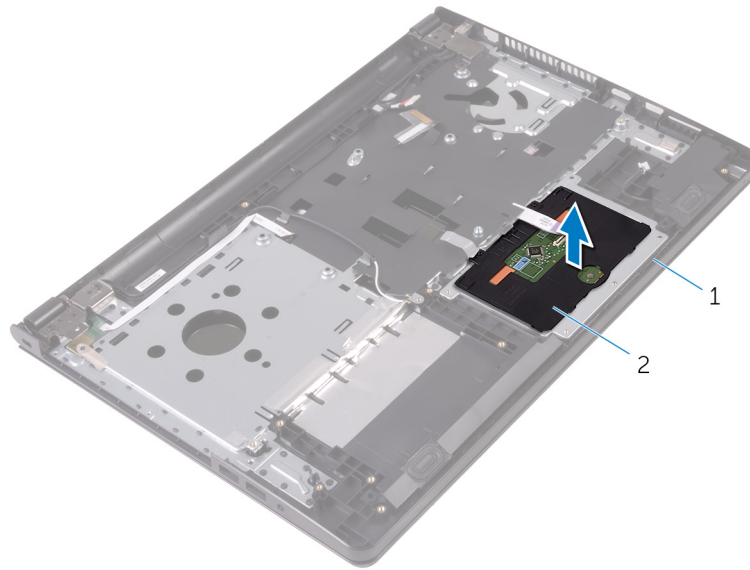
- | | |
|-----------------------|---------------|
| 1. touch-pad cable | 2. latch |
| 3. palm-rest assembly | 4. screws (3) |
| 5. touch-pad bracket | 6. tape |

5. Lift the touch-pad bracket off the touch pad.



- a. touch-pad bracket
- b. palm-rest assembly

6. Lift the touch pad off the palm-rest assembly.



- a. palm-rest assembly
- b. touch pad

Replacing the touch pad

NOTE: Before working inside your computer, read the safety information that shipped with your computer and follow the steps in [Before working inside your computer](#). After working inside your computer, follow the instructions in [After working inside your computer](#). For more safety best practices, see the Regulatory Compliance home page at www.dell.com/regulatory_compliance.

Topics:

- [Procedure](#)
- [Post-requisites](#)

Procedure

1. Place the touch pad on the palm-rest assembly.
2. Slide the tabs on the touch-pad bracket into the slots on the palm-rest assembly.
3. Slide the touch-pad cable into the connector on the touch pad and close the latch to secure the cable.
4. Align the screw holes on the touch-pad bracket with the screw holes on the palm-rest assembly.
5. Replace the screws that secure the touch-pad bracket to the palm-rest assembly.
6. Adhere the tape over the touch-pad bracket.

Post-requisites

1. Replace the [heat sink](#).
2. Replace the [I/O board](#).
3. Replace the [wireless card](#).
4. Replace the [memory module](#).
5. Follow the procedure from step 4 to step 6 in "[Replacing the hard drive](#)".
6. Follow the procedure from step 3 to step 7 in "[Replacing the base cover](#)".
7. Follow the procedures from step 4 to step 5 in "[Replacing the optical drive](#)".
8. Replace the [keyboard](#).
9. Replace the [battery](#).

Removing the power-adapter port

NOTE: Before working inside your computer, read the safety information that shipped with your computer and follow the steps in [Before working inside your computer](#). After working inside your computer, follow the instructions in [After working inside your computer](#). For more safety best practices, see the Regulatory Compliance home page at www.dell.com/regulatory_compliance.

Topics:

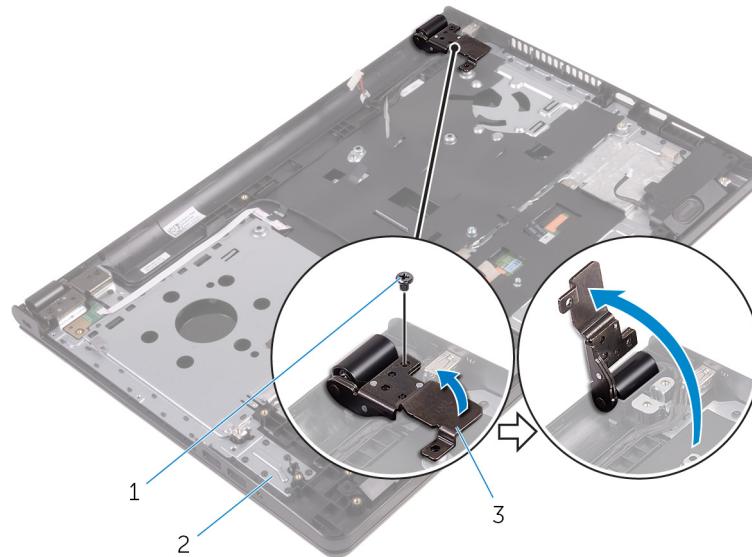
- [Prerequisites](#)
- [Procedure](#)

Prerequisites

1. Remove the [battery](#).
2. Follow the procedure from step 1 to step 3 in "[Removing the optical drive](#)".
3. Remove the [keyboard](#).
4. Follow the procedure from step 1 to step 5 in "[Removing the base cover](#)".
5. Follow the procedure from step 1 to step 3 in "[Removing the hard drive](#)".
6. Remove the [memory module](#).
7. Remove the [wireless card](#).
8. Remove the [I/O board](#).
9. Remove the [heat sink](#).
10. Remove the [system board](#).

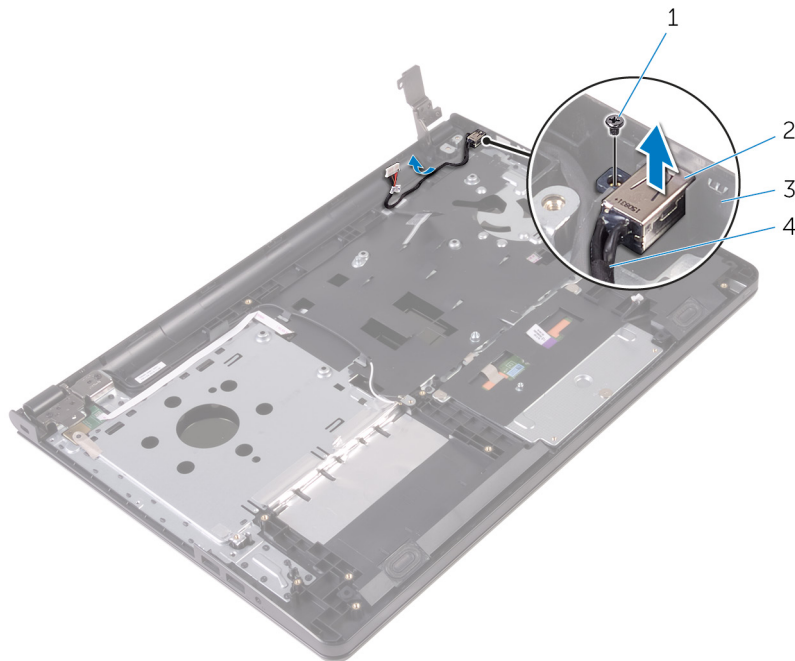
Procedure

1. Remove the screw that secures the display hinge to the palm-rest assembly.
2. Open the display hinge to an angle of 90 degrees.



- a. screw
- b. palm-rest assembly
- c. display hinge

3. Note the power-adaptor port cable routing and remove the cable from its routing guides.
4. Remove the screw that secures the power-adaptor port to the palm-rest assembly.
5. Lift the power-adaptor port, along with its cable, off the palm-rest assembly.



- | | |
|-----------------------|-----------------------------|
| 1. screw | 2. power-adaptor port |
| 3. palm-rest assembly | 4. power-adaptor port cable |

Replacing the power-adapter port

NOTE: Before working inside your computer, read the safety information that shipped with your computer and follow the steps in [Before working inside your computer](#). After working inside your computer, follow the instructions in [After working inside your computer](#). For more safety best practices, see the Regulatory Compliance home page at www.dell.com/regulatory_compliance.

Topics:

- [Procedure](#)
- [Post-requisites](#)

Procedure

1. Slide the power-adapter port into the slot on the palm-rest assembly.
2. Replace the screw that secures the power-adapter port to the palm-rest assembly.
3. Route the power-adapter port cable along its routing guides on the palm-rest assembly.
4. Close the display hinge and replace the screw that secures the display hinge to the palm-rest assembly.

Post-requisites

1. Replace the [display assembly](#).
2. Replace the [system board](#).
3. Replace the [heat sink](#).
4. Replace the [I/O board](#).
5. Replace the [wireless card](#).
6. Replace the [memory module](#).
7. Follow the procedure from step 4 to step 6 in "[Replacing the hard drive](#)".
8. Follow the procedure from step 3 to step 7 in "[Replacing the base cover](#)".
9. Follow the procedures from step 4 to step 5 in "[Replacing the optical drive](#)".
10. Replace the [keyboard](#).
11. Replace the [battery](#).

Removing the display assembly

NOTE: Before working inside your computer, read the safety information that shipped with your computer and follow the steps in [Before working inside your computer](#). After working inside your computer, follow the instructions in [After working inside your computer](#). For more safety best practices, see the Regulatory Compliance home page at www.dell.com/regulatory_compliance.

Topics:

- [Prerequisites](#)
- [Procedure](#)

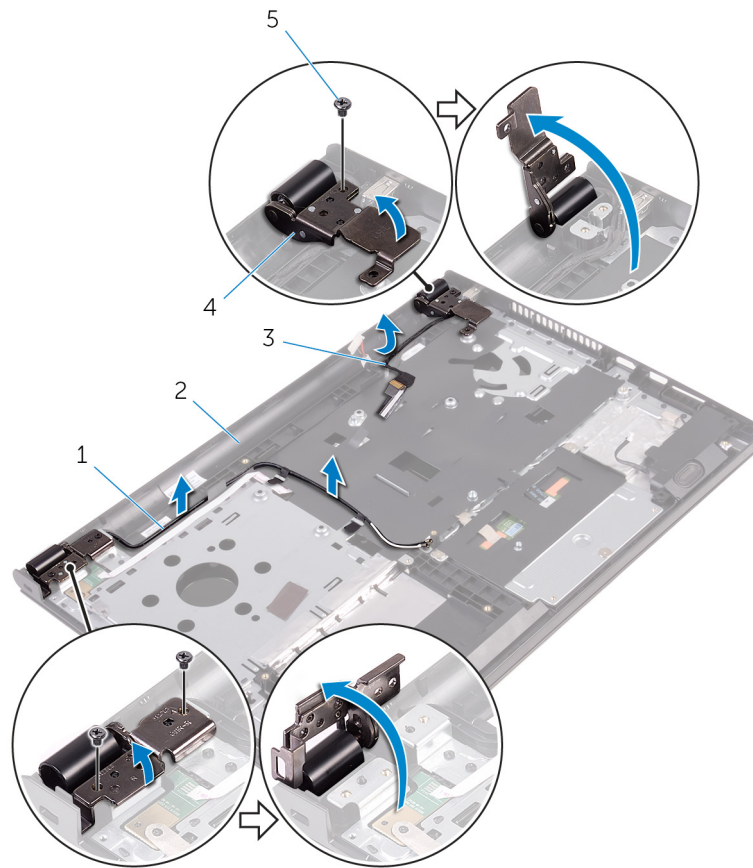
Prerequisites

NOTE: These instructions are applicable only for laptops with a non-touch screen display.

1. Remove the [battery](#).
2. Follow the procedure from step 1 to step 3 in "[Removing the optical drive](#)".
3. Remove the [keyboard](#).
4. Follow the procedure from step 1 to step 5 in "[Removing the base cover](#)".
5. Follow the procedure from step 1 to step 3 in "[Removing the hard drive](#)".
6. Remove the [memory module](#).
7. Remove the [wireless card](#).
8. Remove the [I/O board](#).
9. Remove the [heat sink](#).
10. Remove the [system board](#).

Procedure

1. Remove the screws that secure the display hinges to the palm-rest assembly and open the hinges to an angle of 90 degrees.
2. Note the antenna cable routing and remove the cable from its routing guides on the palm-rest assembly.
3. Note the display cable routing and remove the cable from its routing guides on the palm-rest assembly.



1. antenna cables (2)

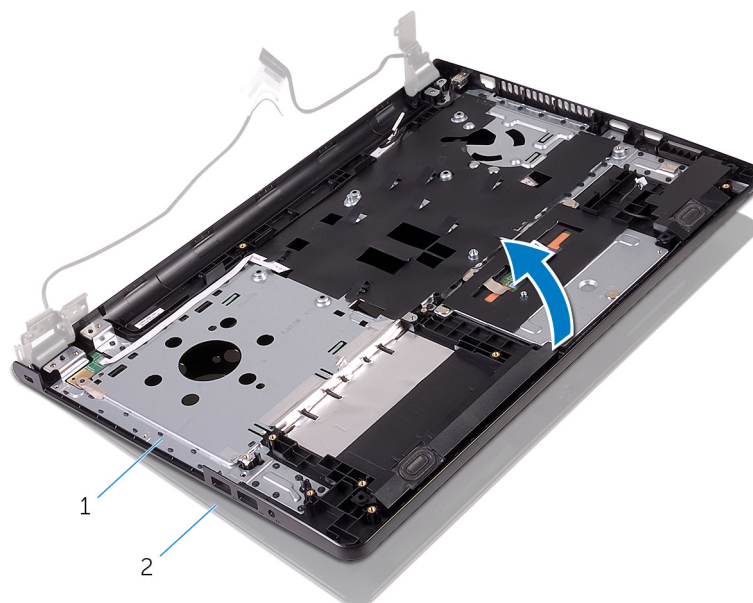
2. palm-rest assembly

3. display cable

4. display hinges (2)

5. screws (3)

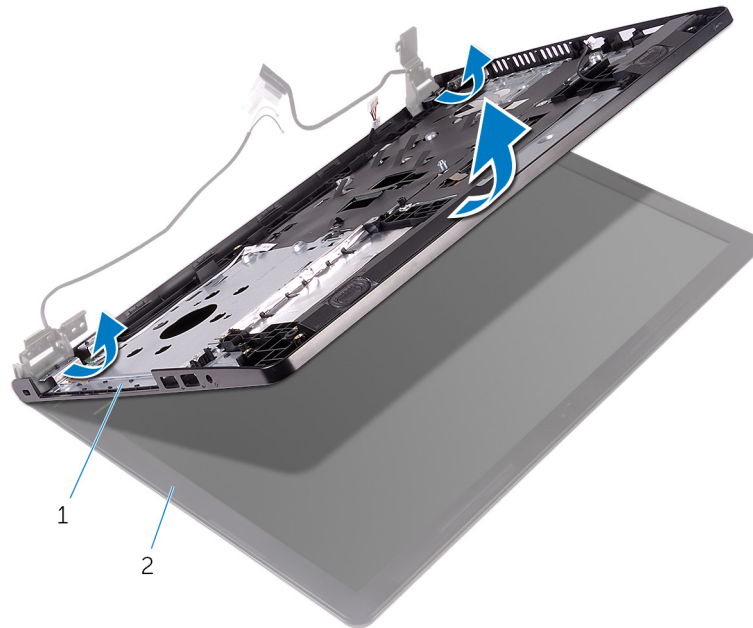
4. Open the palm-rest assembly.



a. palm-rest assembly

b. display assembly

5. Lift the palm-rest assembly at an angle off the display assembly.



a. palm-rest assembly

b. display assembly

6. Place the display assembly on a clean, flat surface.



a. display assembly

Replacing the display assembly

NOTE: Before working inside your computer, read the safety information that shipped with your computer and follow the steps in [Before working inside your computer](#). After working inside your computer, follow the instructions in [After working inside your computer](#). For more safety best practices, see the Regulatory Compliance home page at www.dell.com/regulatory_compliance.

Topics:

- [Procedure](#)
- [Post-requisites](#)

Procedure

1. Place the display assembly on the palm-rest assembly.
2. Close the display hinges and align the screw holes on the display hinges with the screw holes on the palm-rest assembly.
3. Replace the screws that secure the display hinges to the palm-rest assembly.
4. Route the display cable through its routing guides on the palm-rest assembly.
5. Route the antenna cables through its routing guides on the palm-rest assembly.
6. Close the display and turn the computer over.

Post-requisites

1. Replace the [system board](#).
2. Replace the [heat sink](#).
3. Replace the [I/O board](#).
4. Replace the [wireless card](#).
5. Replace the [memory module](#).
6. Follow the procedure from step 4 to step 6 in "[Replacing the hard drive](#)".
7. Follow the procedure from step 3 to step 7 in "[Replacing the base cover](#)".
8. Follow the procedures from step 4 to step 5 in "[Replacing the optical drive](#)".
9. Replace the [keyboard](#).
10. Replace the [battery](#).

Removing the display bezel

NOTE: Before working inside your computer, read the safety information that shipped with your computer and follow the steps in [Before working inside your computer](#). After working inside your computer, follow the instructions in [After working inside your computer](#). For more safety best practices, see the Regulatory Compliance home page at www.dell.com/regulatory_compliance.

Topics:

- [Prerequisites](#)
- [Procedure](#)

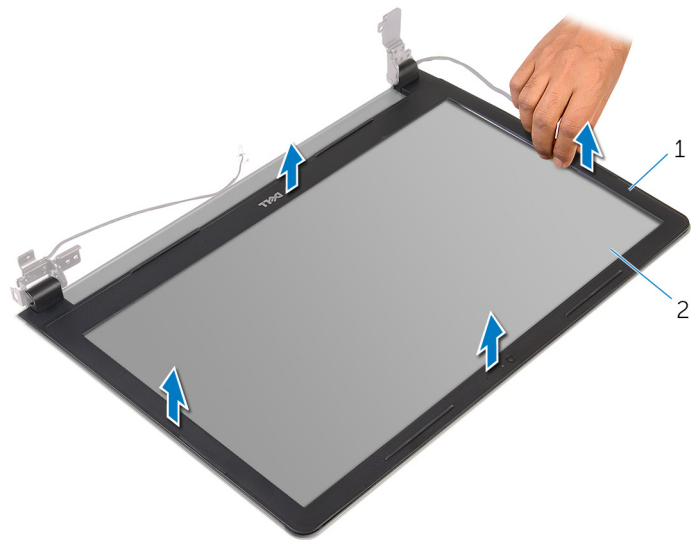
Prerequisites

NOTE: These instructions are applicable only for laptops with a non-touch screen display.

1. Remove the [battery](#).
2. Follow the procedure from step 1 to step 3 in "[Removing the optical drive](#)".
3. Remove the [keyboard](#).
4. Follow the procedure from step 1 to step 5 in "[Removing the base cover](#)".
5. Follow the procedure from step 1 to step 3 in "[Removing the hard drive](#)".
6. Remove the [memory module](#).
7. Remove the [wireless card](#).
8. Remove the [I/O board](#).
9. Remove the [heat sink](#).
10. Remove the [system board](#).
11. Remove the [display assembly](#).

Procedure

1. Using your fingertips, gently pry up the inner edges of the display bezel.
2. Lift the display bezel off the display assembly.



- a. display bezel
- b. display panel

Replacing the display bezel

NOTE: Before working inside your computer, read the safety information that shipped with your computer and follow the steps in [Before working inside your computer](#). After working inside your computer, follow the instructions in [After working inside your computer](#). For more safety best practices, see the Regulatory Compliance home page at www.dell.com/regulatory_compliance.

Topics:

- [Procedure](#)
- [Post-requisites](#)

Procedure

Align the display bezel with the display back-cover and gently snap the display bezel into place.

Post-requisites

1. Replace the [display assembly](#).
2. Replace the [system board](#).
3. Replace the [heat sink](#).
4. Replace the [I/O board](#).
5. Replace the [wireless card](#).
6. Replace the [memory module](#).
7. Follow the procedure from step 4 to step 6 in "[Replacing the hard drive](#)".
8. Follow the procedure from step 3 to step 7 in "[Replacing the base cover](#)".
9. Follow the procedures from step 4 to step 5 in "[Replacing the optical drive](#)".
10. Replace the [keyboard](#).
11. Replace the [battery](#).

Removing the display panel

NOTE: Before working inside your computer, read the safety information that shipped with your computer and follow the steps in [Before working inside your computer](#). After working inside your computer, follow the instructions in [After working inside your computer](#). For more safety best practices, see the Regulatory Compliance home page at www.dell.com/regulatory_compliance.

Topics:

- [Prerequisites](#)
- [Procedure](#)

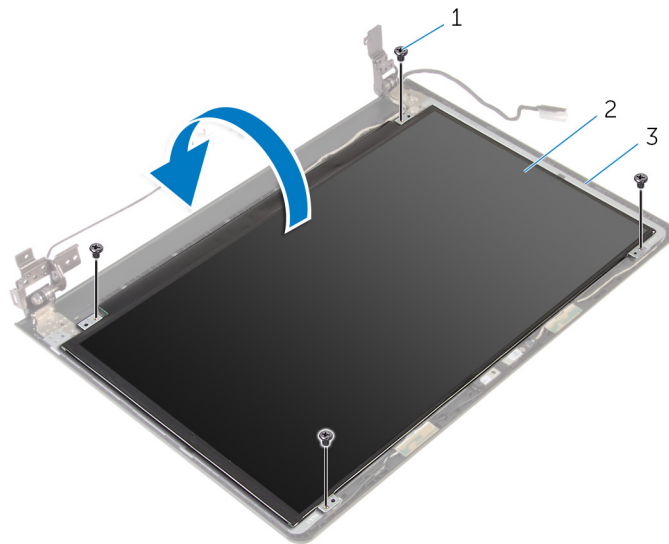
Prerequisites

NOTE: These instructions are applicable only for laptops with a non-touch screen display.

1. Remove the [battery](#).
2. Follow the procedure from step 1 to step 3 in "[Removing the optical drive](#)".
3. Remove the [keyboard](#).
4. Follow the procedure from step 1 to step 5 in "[Removing the base cover](#)".
5. Follow the procedure from step 1 to step 3 in "[Removing the hard drive](#)".
6. Remove the [memory module](#).
7. Remove the [wireless card](#).
8. Remove the [I/O board](#).
9. Remove the [heat sink](#).
10. Remove the [system board](#).
11. Remove the [display assembly](#).
12. Remove the [display bezel](#).

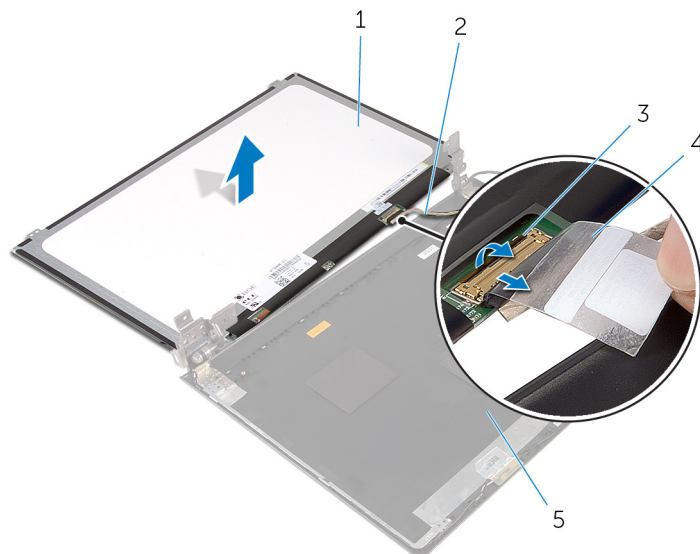
Procedure

1. Remove the screws that secure the display panel to the display back-cover.
2. Turn the display panel over.



- a. screws (4)
- b. display panel
- c. display back-cover

3. Peel the tape that secures the display cable to the display back-cover.
4. Open the latch and disconnect the display cable from the display back-cover.
5. Lift the display panel off the display back-cover.



- 1. display panel
- 3. latch
- 5. display back-cover

- 2. display cable
- 4. tape

Replacing the display panel

NOTE: Before working inside your computer, read the safety information that shipped with your computer and follow the steps in [Before working inside your computer](#). After working inside your computer, follow the instructions in [After working inside your computer](#). For more safety best practices, see the Regulatory Compliance home page at www.dell.com/regulatory_compliance.

Topics:

- [Procedure](#)
- [Post-requisites](#)

Procedure

1. Slide the display cable into the connector on the display back-cover and close the latch to secure the cable.
2. Adhere the tape that secures the display cable to the display back-cover.
3. Turn the display panel over and place it on the display back-cover.
4. Align the screw holes on the display panel with the screw holes on the display back-cover.
5. Replace the screws that secure the display panel to the display back-cover.

Post-requisites

1. Replace the [display bezel](#).
2. Replace the [display assembly](#).
3. Replace the [system board](#).
4. Replace the [heat sink](#).
5. Replace the [I/O board](#).
6. Replace the [wireless card](#).
7. Replace the [memory module](#).
8. Follow the procedure from step 4 to step 6 in "[Replacing the hard drive](#)".
9. Follow the procedure from step 3 to step 7 in "[Replacing the base cover](#)".
10. Follow the procedures from step 4 to step 5 in "[Replacing the optical drive](#)".
11. Replace the [keyboard](#).
12. Replace the [battery](#).

Removing the camera

NOTE: Before working inside your computer, read the safety information that shipped with your computer and follow the steps in [Before working inside your computer](#). After working inside your computer, follow the instructions in [After working inside your computer](#). For more safety best practices, see the Regulatory Compliance home page at www.dell.com/regulatory_compliance.

Topics:

- [Prerequisites](#)
- [Procedure](#)

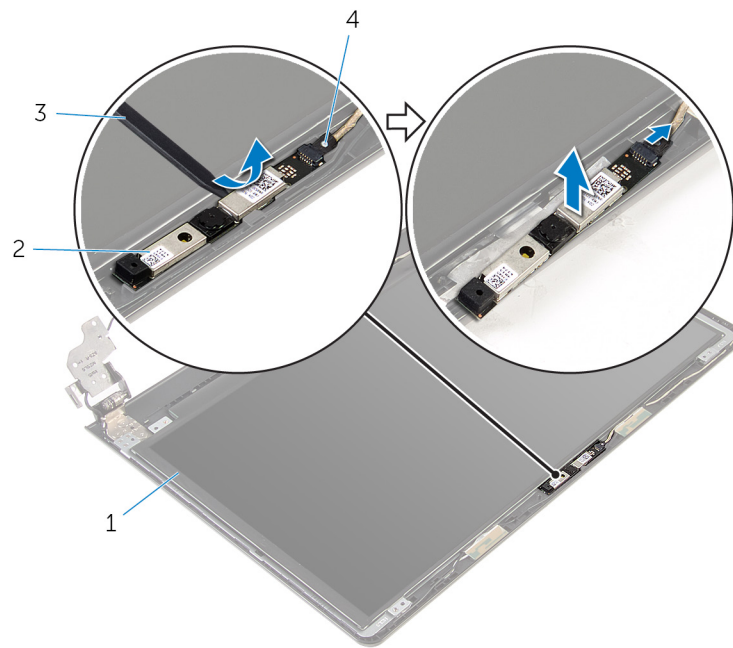
Prerequisites

NOTE: These instructions are applicable only for laptops with a non-touchscreen display.

1. Remove the [battery](#).
2. Follow the procedure from step 1 to step 3 in "[Removing the optical drive](#)".
3. Remove the [keyboard](#).
4. Follow the procedure from step 1 to step 5 in "[Removing the base cover](#)".
5. Follow the procedure from step 1 to step 3 in "[Removing the hard drive](#)".
6. Remove the [memory module](#).
7. Remove the [wireless card](#).
8. Remove the [I/O board](#).
9. Remove the [heat sink](#).
10. Remove the [system board](#).
11. Remove the [display assembly](#).
12. Remove the [display bezel](#).

Procedure

1. Using a plastic scribe, gently pry the camera off the display back-cover.
2. Disconnect the camera cable from the camera.



1. display back-cover

2. camera

3. plastic scribe

4. camera cable

Replacing the camera

NOTE: Before working inside your computer, read the safety information that shipped with your computer and follow the steps in [Before working inside your computer](#). After working inside your computer, follow the instructions in [After working inside your computer](#). For more safety best practices, see the Regulatory Compliance home page at www.dell.com/regulatory_compliance.

Topics:

- [Procedure](#)
- [Post-requisites](#)

Procedure

1. Connect the camera cable to the camera.
2. Align the camera to the alignment posts on the display back-cover and snap the camera in place.

Post-requisites

1. Replace the [display bezel](#).
2. Replace the [display assembly](#).
3. Replace the [system board](#).
4. Replace the [heat sink](#).
5. Replace the [I/O board](#).
6. Replace the [wireless card](#).
7. Replace the [memory module](#).
8. Follow the procedure from step 4 to step 6 in “[Replacing the hard drive](#)”.
9. Follow the procedure from step 3 to step 7 in “[Replacing the base cover](#)”.
10. Follow the procedures from step 4 to step 5 in “[Replacing the optical drive](#)”.
11. Replace the [keyboard](#).
12. Replace the [battery](#).

Removing the display hinges

NOTE: Before working inside your computer, read the safety information that shipped with your computer and follow the steps in [Before working inside your computer](#). After working inside your computer, follow the instructions in [After working inside your computer](#). For more safety best practices, see the Regulatory Compliance home page at www.dell.com/regulatory_compliance.

Topics:

- [Prerequisites](#)
- [Procedure](#)

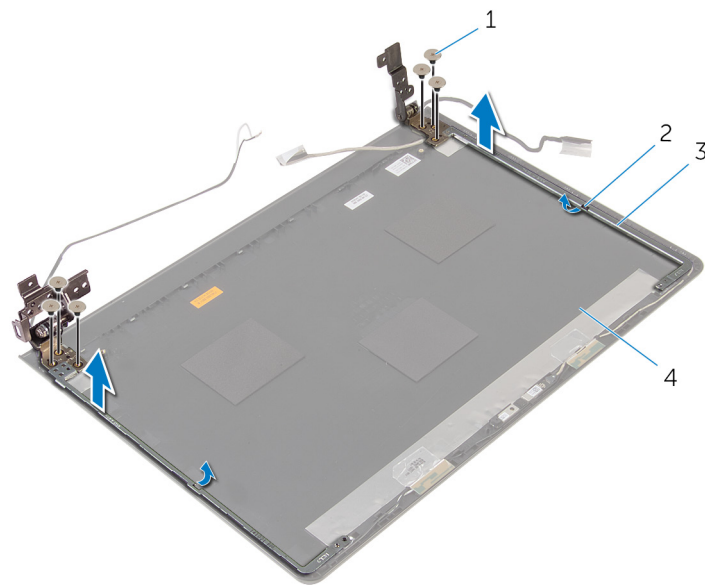
Prerequisites

NOTE: These instructions are applicable only for laptops with a non-touchscreen display.

1. Remove the [battery](#).
2. Follow the procedure from step 1 to step 3 in "[Removing the optical drive](#)".
3. Remove the [keyboard](#).
4. Follow the procedure from step 1 to step 5 in "[Removing the base cover](#)".
5. Follow the procedure from step 1 to step 3 in "[Removing the hard drive](#)".
6. Remove the [memory module](#).
7. Remove the [wireless card](#).
8. Remove the [I/O board](#).
9. Remove the [heat sink](#).
10. Remove the [system board](#).
11. Remove the [heat sink](#).
12. Remove the [display bezel](#).
13. Remove the [display panel](#).

Procedure

1. Remove the screws that secure the display hinges to the display back-cover.
2. Release the hinges from the latches and lift the display hinges off the display back-cover.



- 1. screws (6)
- 3. display hinges (2)

- 2. latches (2)
- 4. display back-cover

Replacing the display hinges

NOTE: Before working inside your computer, read the safety information that shipped with your computer and follow the steps in [Before working inside your computer](#). After working inside your computer, follow the instructions in [After working inside your computer](#). For more safety best practices, see the Regulatory Compliance home page at www.dell.com/regulatory_compliance.

Topics:

- [Procedure](#)
- [Post-requisites](#)

Procedure

1. Slide the hinges under the latches on the display back-cover.
2. Align the screw holes on the display hinges with the screw holes on the display back-cover.
3. Replace the screws that secure the display hinges to the display back-cover.

Post-requisites

1. Replace the [display panel](#).
2. Replace the [display bezel](#).
3. Replace the [display assembly](#).
4. Replace the [system board](#).
5. Replace the [heat sink](#).
6. Replace the [I/O board](#).
7. Replace the [wireless card](#).
8. Replace the [memory module](#).
9. Follow the procedure from step 4 to step 6 in "[Replacing the hard drive](#)".
10. Follow the procedure from step 3 to step 7 in "[Replacing the base cover](#)".
11. Follow the procedures from step 4 to step 5 in "[Replacing the optical drive](#)".
12. Replace the [keyboard](#).
13. Replace the [battery](#).

Removing the palm rest

NOTE: Before working inside your computer, read the safety information that shipped with your computer and follow the steps in [Before working inside your computer](#). After working inside your computer, follow the instructions in [After working inside your computer](#). For more safety best practices, see the Regulatory Compliance home page at www.dell.com/regulatory_compliance.

Topics:

- [Prerequisites](#)
- [Procedure](#)

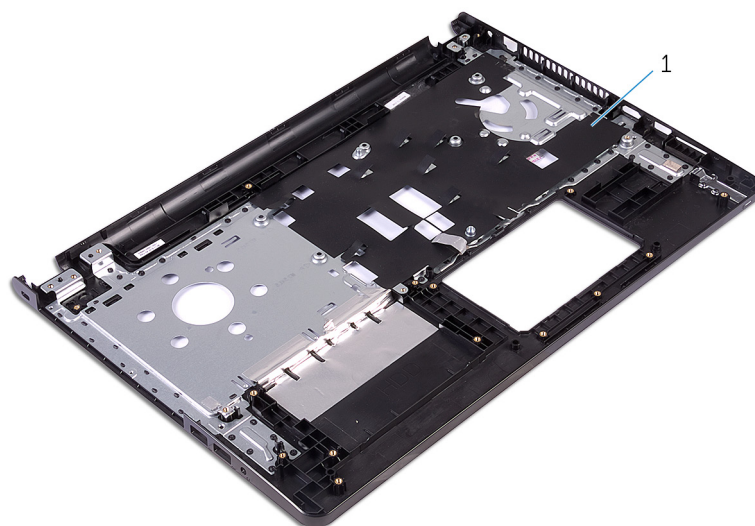
Prerequisites

NOTE: These instructions are applicable only for laptops with a non-touch screen display.

1. Remove the [battery](#).
2. Follow the procedure from step 1 to step 3 in "[Removing the optical drive](#)".
3. Remove the [keyboard](#).
4. Follow the procedure from step 1 to step 5 in "[Removing the base cover](#)".
5. Follow the procedure from step 1 to step 3 in "[Removing the hard drive](#)".
6. Remove the [memory module](#).
7. Remove the [wireless card](#).
8. Remove the [power-button board](#).
9. Remove the [speakers](#).
10. Remove the [I/O board](#).
11. Remove the [heat sink](#).
12. Remove the [system board](#).
13. Remove the [touch pad](#).
14. Remove the [power-adaptor port](#).
15. Remove the [display assembly](#).

Procedure

After performing the prerequisites, we are left with the palm rest.



1. palm rest

Replacing the palm rest

NOTE: Before working inside your computer, read the safety information that shipped with your computer and follow the steps in [Before working inside your computer](#). After working inside your computer, follow the instructions in [After working inside your computer](#). For more safety best practices, see the Regulatory Compliance home page at www.dell.com/regulatory_compliance.

Topics:

- [Procedure](#)
- [Post-requisites](#)

Procedure

Place the palm rest on a clean and flat surface.


Post-requisites

1. Replace the [display assembly](#).
2. Replace the [power-adaptor port](#).
3. Replace the [touch pad](#).
4. Replace the [system board](#).
5. Replace the [heat sink](#).
6. Replace the [I/O board](#).
7. Replace the [speakers](#).
8. Replace the [power-button board](#).
9. Replace the [wireless card](#).
10. Replace the [memory module](#).
11. Follow the procedure from step 4 to step 6 in "[Replacing the hard drive](#)".
12. Follow the procedure from step 3 to step 7 in "[Replacing the base cover](#)".
13. Replace the [keyboard](#).
14. Follow the procedures from step 4 to step 5 in "[Replacing the optical drive](#)".
15. Replace the [battery](#).

Flashing the BIOS

You may need to flash (update) the BIOS when an update is available or when you replace the system board. To flash the BIOS:

1. Turn on the computer.
2. Go to **www.dell.com/support**.
3. Click **Product Support**, enter the Service Tag of your computer and click **Submit**.



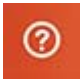
 **NOTE:** If you do not have the Service Tag, use the auto-detect feature or manually browse for your computer model.

4. Click **Drivers & downloads**.
5. Select the operating system installed on your computer.
6. Scroll down the page and expand **BIOS**.
7. Click **Download File** to download the latest version of the BIOS for your computer.
8. Save the file and, once the download is complete, navigate to the folder where you saved the BIOS update file.
9. Double-click the BIOS update file icon and follow the instructions on the screen.

Getting help and contacting Dell


Self-help resources


You can get information and help on Dell products and services using these self-help resources:

Information about Dell products and services	www.dell.com
Windows 8.1 and Windows 10	Dell Help & Support app 
Windows 10	Get started app 
Windows 8.1	Help + Tips app 
Accessing help in Windows 8, Windows 8.1, and Windows 10	In Windows search, type Help and Support , and press Enter .
Accessing help in Windows 7	Click Start > Help and Support .
Online help for operating system	www.dell.com/support/windows www.dell.com/support/linux
Troubleshooting information, user manuals, setup instructions, product specifications, technical help blogs, drivers, software updates, and so on	www.dell.com/support
Learn about your operating system, setting up and using your computer, data backup, diagnostics, and so on.	See <i>Me and My Dell</i> at www.dell.com/support/manuals .

Contacting Dell

To contact Dell for sales, technical support, or customer service issues, see **www.dell.com/contactdell**.

 **NOTE:** Availability varies by country and product, and some services may not be available in your country.

 **NOTE:** If you do not have an active internet connection, you can find contact information on your purchase invoice, packing slip, bill, or Dell product catalog.